



BLACKCOCO's[®]

**PRODUCT
PRESENTATION**

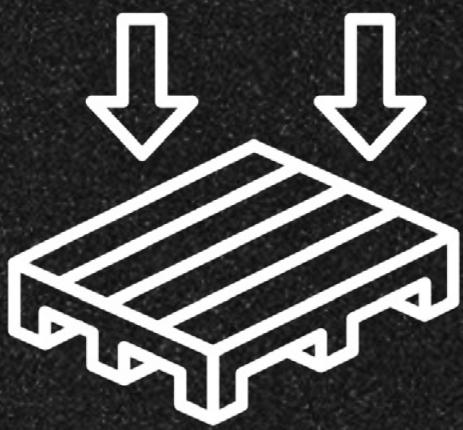
TOPSELLER

CUBES26

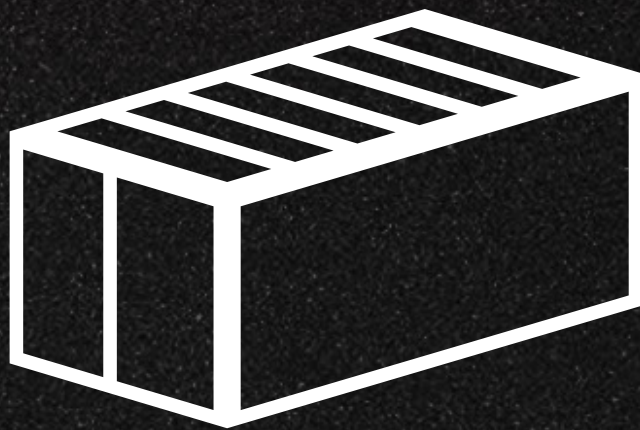
THE ORIGINAL



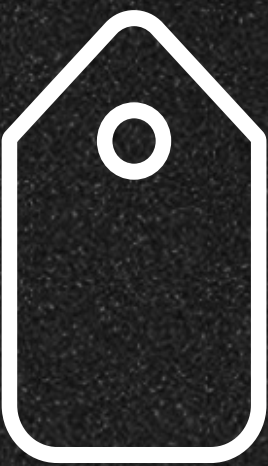
**GLOBAL
RATINGS**



Pallet
700 KG
35 x 20 KG



Container
18.000 KG
900 x 20 KG



**Recommended
retail price**
6,45 €
gross

**Purchase
price**
1 KG 2,45 €
net

**Attractive
Profit margins**
Up to
150 %

TOPSELLER

CUBES26

THE ORIGINAL

- **Premium natural** coconut coal
- **SIZE: 26 x 26 x 26 MM**
- **Even**, long burning time
- **No** Intrinsic taste
- **Absolutely free** from chemicals
- **Strictly** controlled



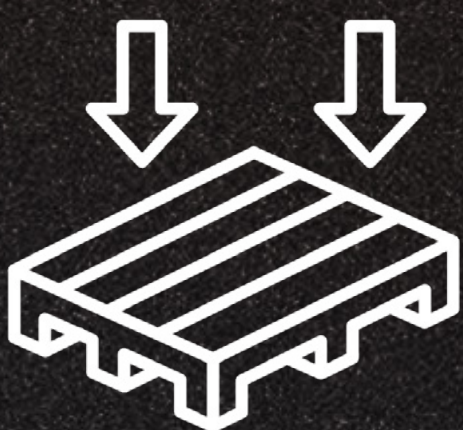
TOPSELLER

CUBES27+

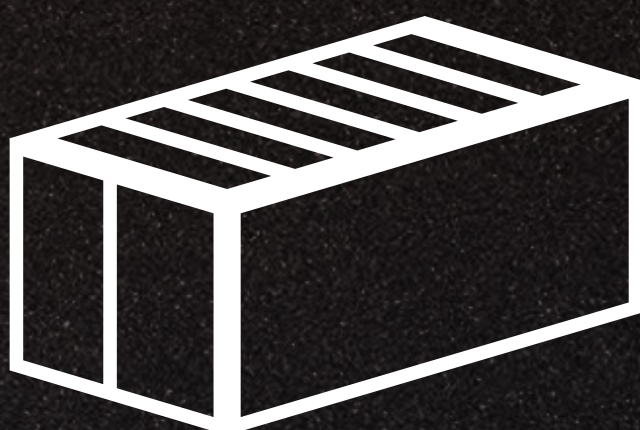
THE OVERSIZED



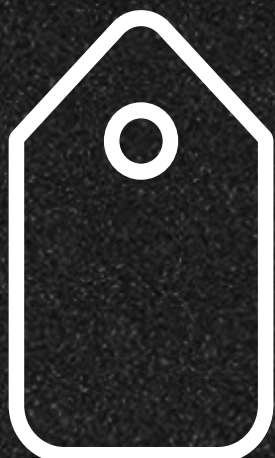
**GLOBAL
RATINGS**



Pallet
800 KG
40 x 20 KG



Container
18.000 KG
900 x 20 KG



**Recommended
retail price**
6,45 €
gross

**Purchase
price**
1 KG 2,45 €
net

**Attractive
Profit margins**
Up to
150 %

TOPSELLER

CUBES27+

THE OVERSIZED

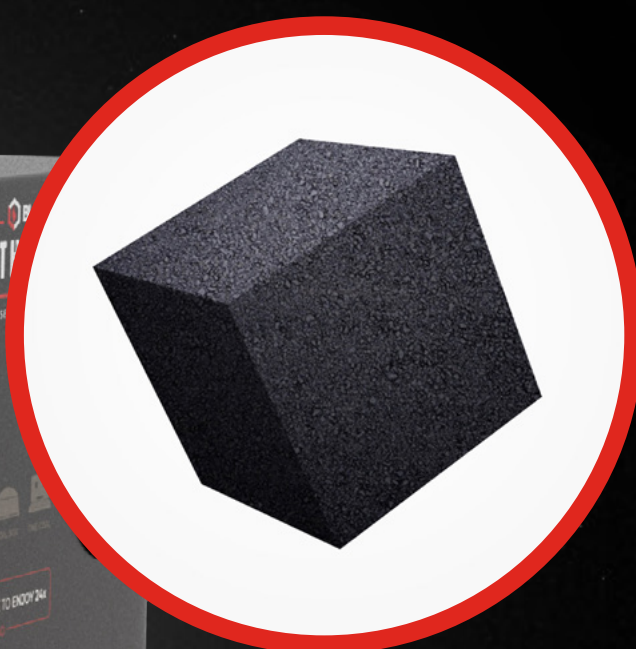
- **Premium natural** coconut coal
- **SIZE: 27,5 x 27,5 x 27,5 MM**
- **Even**, long burning time
- **No** Intrinsic taste
- **Absolutely free** from chemicals
- **Strictly** controlled



FURTHER PRODUCTS

CUBES25

CLASSIC FIT



25 X 25 X 25 MM

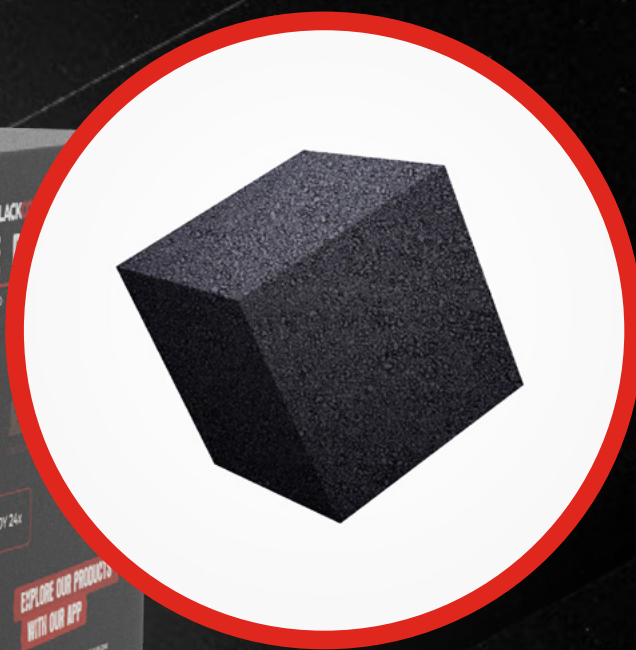
Content: 72 coals

Palett: 720 KG
36 x 20 KG

Container: 18.000 KG
900 x 20 KG

CUBES22

STRONG MINI



22 X 22 X 22 MM

Content: 96 coals

Palett: 720 KG
36 x 20 KG

Container: 18.000 KG
900 x 20 KG

FURTHER PRODUCTS

RECTS20

HARD BRICK



26 X 26 X 20 MM

Content: 80 coals

Palett: 700 KG
35 x 20 KG

Container: 18.000 KG
900 x 20 KG

STICKS30

HOT FINGER



Ø 20 X 30 MM

Content: 105 coals

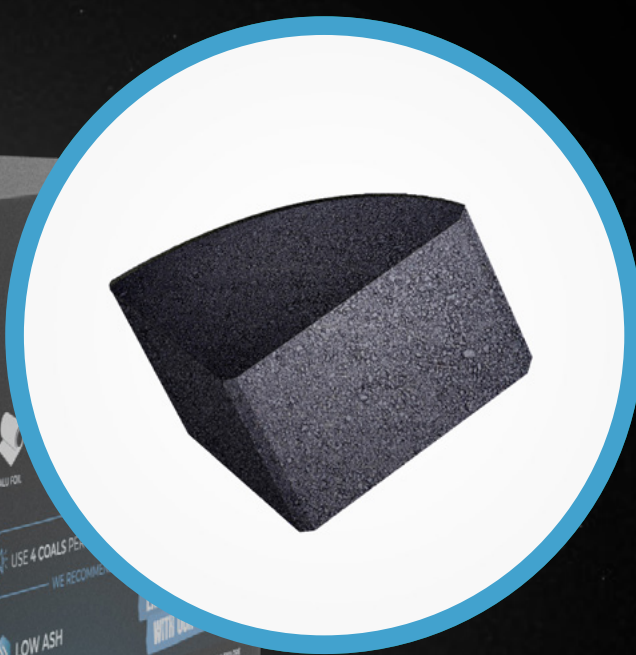
Palett: 700 KG
35 x 20 KG

Container: 18.000 KG
900 x 20 KG

FURTHER PRODUCTS

CIRCLES4

DIAMOND PLUS



Ø 50 X 25 MM

Content: 96 coals

Palett: 700 KG
35 x 20 KG

Container: 18.000 KG
900 x 20 KG

CIRCLES3

DIAMOND STAR



Ø 48 X 22 MM

Content: 90 coals

Palett: 700 KG
35 x 20 KG

Container: 18.000 KG
900 x 20 KG

POS DISPLAYS

CUBES26

THE ORIGINAL



*In addition to attractive sales displays, we also offer individually designed flyers and posters to effectively advertise our products.

REFILLABLE

SUSTAINABLE REUSABILITY



CUBES26

90 x 1 KG

| BENEFITS OF POS DISPLAYS

- **Product promotion:**
Increases the visibility and the sale of products.
- **Increase in sales:**
Promotes impulse buying and increases sales.
- **Consumer experience:**
Improves the shopping experience and creates a positive customer experience.
- **Cross-selling and upselling:**
Promotes the sale of accessories or complementary products.

Dimensions:

(L) 594 mm

(B) 394 mm

(H) 1990 mm



DISPOSABLE

EASY DISPOSAL AFTER USE



CUBES26

135 x 1 KG

| BENEFITS OF POS DISPLAYS

- **Product promotion:**
Increases the presence of products and boosts their sales.
- **Increase in sales:**
Stimulates impulse purchases and leads to sales increases.
- **Consumer experience:**
Optimizes the shopping experience and creates a positive customer experience.
- **Cross-selling and upselling:**
Supports the sale of additional products or complementary items.

Dimensions:

(L) 557 mm

(B) 343 mm

(H) 1480 mm



WOOD

STYLISH AND ECO-FRIENDLY



CUBES26

90 x 1 KG

| BENEFITS OF POS DISPLAYS

- **Product promotion:**
Increases the presence of products and helps to increase sales.
- **Increase in sales:**
Stimulates impulse purchases and leads to an increase in overall sales.
- **Consumer experience:**
Optimizes the shopping experience and creates positive customer loyalty.
- **Cross-selling and upselling:**
Supports the sale of accessories or complementary products, increasing basket value.

Dimensions:

(L) 552 mm
(B) 370 mm
(H) 1775 mm



METAL

METAL-DISPLAY WITH SHELVES



CUBES26

90 x 1 KG

| BENEFITS OF POS DISPLAYS

- **Product promotion:**
Increases product visibility and helps boost sales figures.
- **Increase in sales:**
Encourages spontaneous purchases to drive overall revenue growth.
- **Consumer experience:**
Enhances the shopping experience and promotes strong customer loyalty.
- **Cross-selling and upselling:**
Facilitates the sale of add-ons or accessories, increasing the total cart value.

Dimensions:

(L) 635 mm

(B) 375 mm

(H) 1900 mm



METAL

METAL-DISPLAY



CUBES26

135 x 1 KG

| BENEFITS OF POS DISPLAYS

- **Product promotion:**
Increases product visibility and contributes to higher sales figures.
- **Increase in sales:**
Encourages impulse purchases and leads to an overall revenue increase
- **Consumer experience:**
Optimizes the shopping experience and fosters strong customer loyalty.
- **Cross-selling and upselling:**
Supports the sale of accessories or complementary products, increasing the cart value.

Dimensions:

(L) 595 mm

(B) 380 mm

(H) 1460 mm



METAL

METAL-DISPLAY



CUBES26

81 x 1 KG

| BENEFITS OF POS DISPLAYS

- **Product promotion:**
Increases product visibility and boosts sales.
- **Increase in sales:**
Encourages impulse purchases and contributes to overall revenue growth.
- **Consumer experience:**
Enhances the shopping experience and strengthens customer loyalty.
- **Cross-selling and upselling:**
Facilitates the sale of accessories and complementary products, increasing the cart value.

Dimensions:

(L) 375 mm
(B) 380 mm
(H) 1375 mm



90 G DISPLAY

SPACE SAVING HIGHLIGHT FOR COUNTERS



CUBES26

20 x 90 G

- 6 coals per package
- 20 packages per display
- 26 X 26 X 26 MM



CUBES26 TRAYS

EFFICIENT SHELF MANAGEMENT



CUBES26

12 x 1 KG



CUBES26

16 x 1 KG

- Closed trays can be easily prepared for sale thanks to a special punching and groove structure.





MERCH





FASHION

