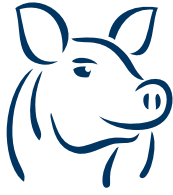




DANISH
PORK MEAT

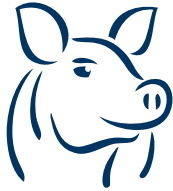


Produktkatalog





DANISH
PORK MEAT



Indholds- fortegnelse

Forender	side 3 - 11
Skinker	side 12 - 30
Kam	side 31 - 41
Bryst	side 42 - 54
Midterstykker	side 55 - 56
Produktionskød	side 57 - 70
Indmad	side 71 - 73
Specialprodukter	side 74 - 100



DANISH 
PORK MEAT



Forender

Side 3 - 11





DANISH 
PORK MEAT



Forender

Halsben | 11416



Phone: +45 55 54 75 00
info@danishporkmeat.com
www.danishporkmeat.com



DANISH 
PORK MEAT



Forender

Bov 1350 | 11011



Phone: +45 55 54 75 00
info@danishporkmeat.com
www.danishporkmeat.com



DANISH 
PORK MEAT



Forender

Bov 1313 | 11009



Phone: +45 55 54 75 00
info@danishporkmeat.com
www.danishporkmeat.com



DANISH 
PORK MEAT



Forender

Forskank / Pork Hochs | 11001



Phone: +45 55 54 75 00
info@danishporkmeat.com
www.danishporkmeat.com



DANISH 
PORK MEAT



Forender

Nakkesteg | 11101



Phone: +45 55 54 75 00
info@danishporkmeat.com
www.danishporkmeat.com



DANISH 
PORK MEAT



Forender

Nakkefilet 1327 | 11107



Phone: +45 55 54 75 00
info@danishporkmeat.com
www.danishporkmeat.com



DANISH 
PORK MEAT



Forender

Nakkefilet 1320 | 11105



Phone: +45 55 54 75 00
info@danishporkmeat.com
www.danishporkmeat.com



DANISH 
PORK MEAT



Forender

Forende 1301 | 11000



Phone: +45 55 54 75 00
info@danishporkmeat.com
www.danishporkmeat.com

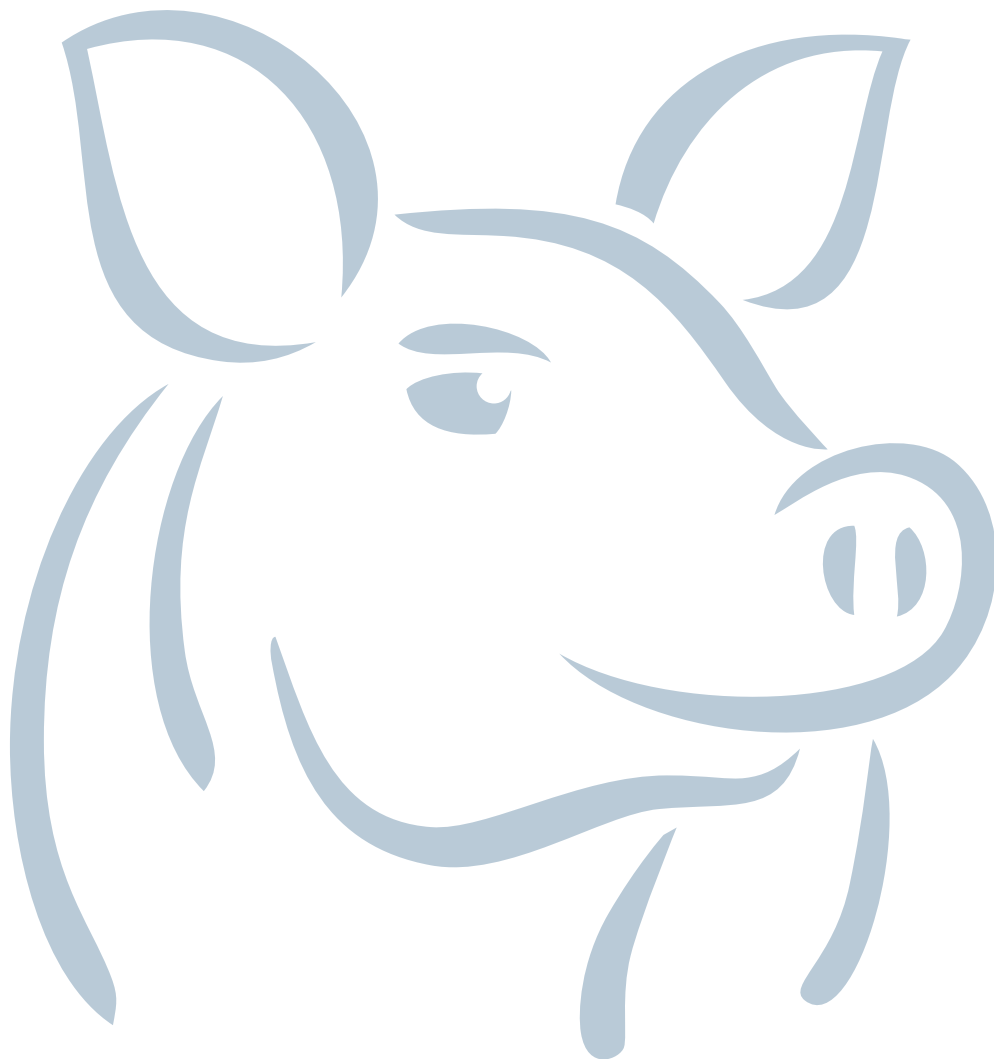


DANISH 
PORK MEAT



Skinker

Side 12 - 30



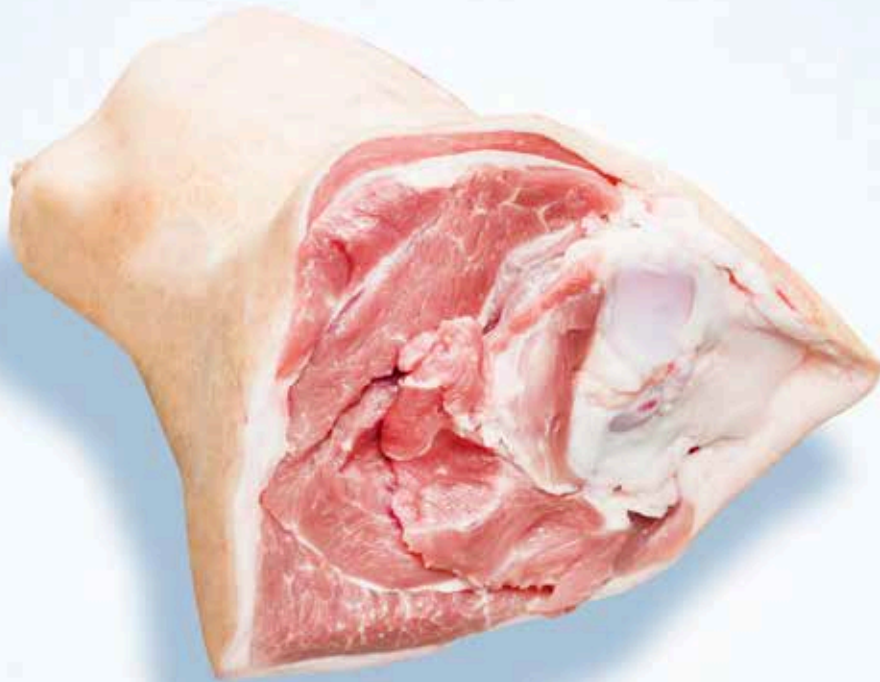


DANISH
PORK MEAT



Skinker

Bagkank m/svær m/ben | 10050



Phone: +45 55 54 75 00
info@danishporkmeat.com
www.danishporkmeat.com

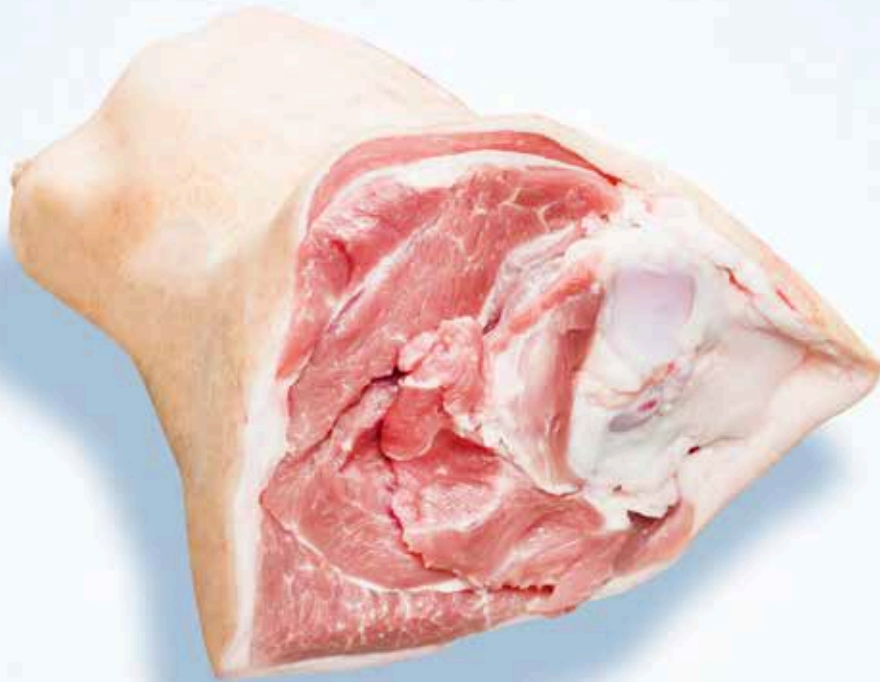


DANISH
PORK MEAT



Skinker

Bagskank m/svær u/ben | 10051



Phone: +45 55 54 75 00
info@danishporkmeat.com
www.danishporkmeat.com

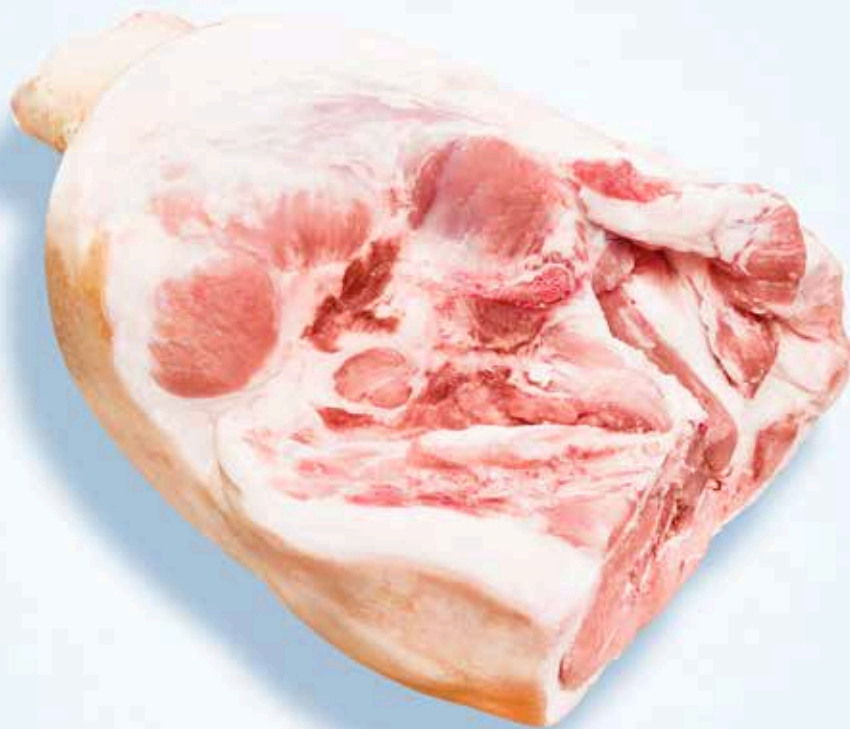


DANISH
PORK MEAT



Skinker

Skinke 1201 | 10054



Phone: +45 55 54 75 00
info@danishporkmeat.com
www.danishporkmeat.com



DANISH 
PORK MEAT



Skinker

Skinke 1203 | 10055



Phone: +45 55 54 75 00
info@danishporkmeat.com
www.danishporkmeat.com



DANISH
PORK MEAT



Skinker

Skinke 1238 | 10056



Phone: +45 55 54 75 00
info@danishporkmeat.com
www.danishporkmeat.com



DANISH
PORK MEAT



Skinker

Skinke 1229 | 10057



Phone: +45 55 54 75 00
info@danishporkmeat.com
www.danishporkmeat.com



DANISH 
PORK MEAT



Skinker

Yderlår m/svær m/1/2 klump | 10061



Phone: +45 55 54 75 00
info@danishporkmeat.com
www.danishporkmeat.com



DANISH
PORK MEAT



Skinker

Yderlår u/svær u/klump | 10062



Phone: +45 55 54 75 00
info@danishporkmeat.com
www.danishporkmeat.com



DANISH
PORK MEAT



Skinker

Yderlår u/svær m/1/2 klump | 10064



Phone: +45 55 54 75 00
info@danishporkmeat.com
www.danishporkmeat.com



DANISH
PORK MEAT



Skinker

Yderlår m/svær u/klump | 10065



Phone: +45 55 54 75 00
info@danishporkmeat.com
www.danishporkmeat.com



DANISH
PORK MEAT



Skinker

Skinkebund m/svær | 10066



Phone: +45 55 54 75 00
info@danishporkmeat.com
www.danishporkmeat.com



DANISH
PORK MEAT



Skinker

Skinkebund u/svær | 10067



Phone: +45 55 54 75 00
info@danishporkmeat.com
www.danishporkmeat.com



DANISH
PORK MEAT



Skinker

Skink Klump | 10200



Phone: +45 55 54 75 00
info@danishporkmeat.com
www.danishporkmeat.com

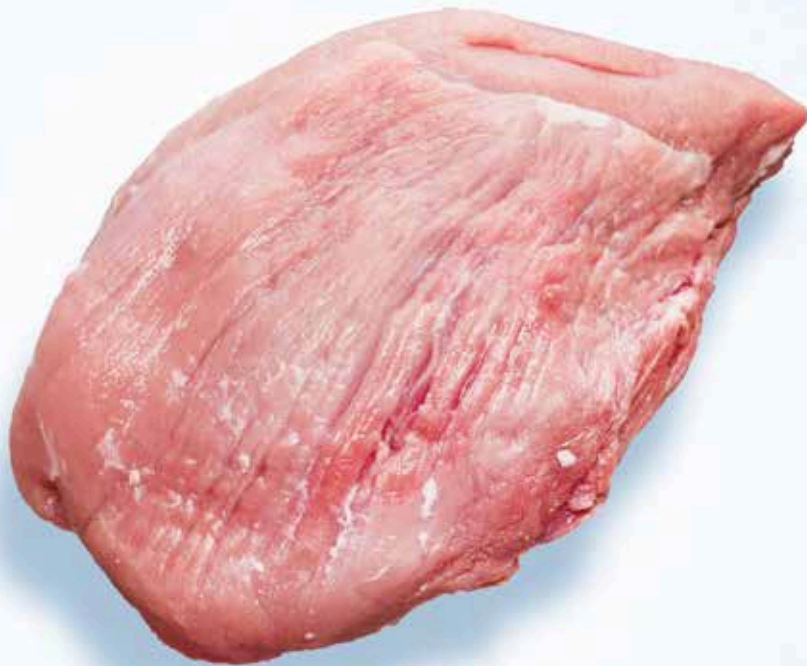


DANISH
PORK MEAT



Skinker

Skink Klump PAD | 10205



Phone: +45 55 54 75 00
info@danishporkmeat.com
www.danishporkmeat.com



DANISH 
PORK MEAT



Skinker

Skinkeinderlår m/kap m/svær | 10300



Phone: +45 55 54 75 00
info@danishporkmeat.com
www.danishporkmeat.com



DANISH 
PORK MEAT



Skinker

Skinkeinderlår u/kap | 10302



Phone: +45 55 54 75 00
info@danishporkmeat.com
www.danishporkmeat.com



DANISH
PORK MEAT



Skinker

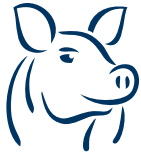
Skinkeinderlår u/kap PAD | 10305



Phone: +45 55 54 75 00
info@danishporkmeat.com
www.danishporkmeat.com



DANISH
PORK MEAT



Skinker

Nøgleben | 11422



Phone: +45 55 54 75 00
info@danishporkmeat.com
www.danishporkmeat.com

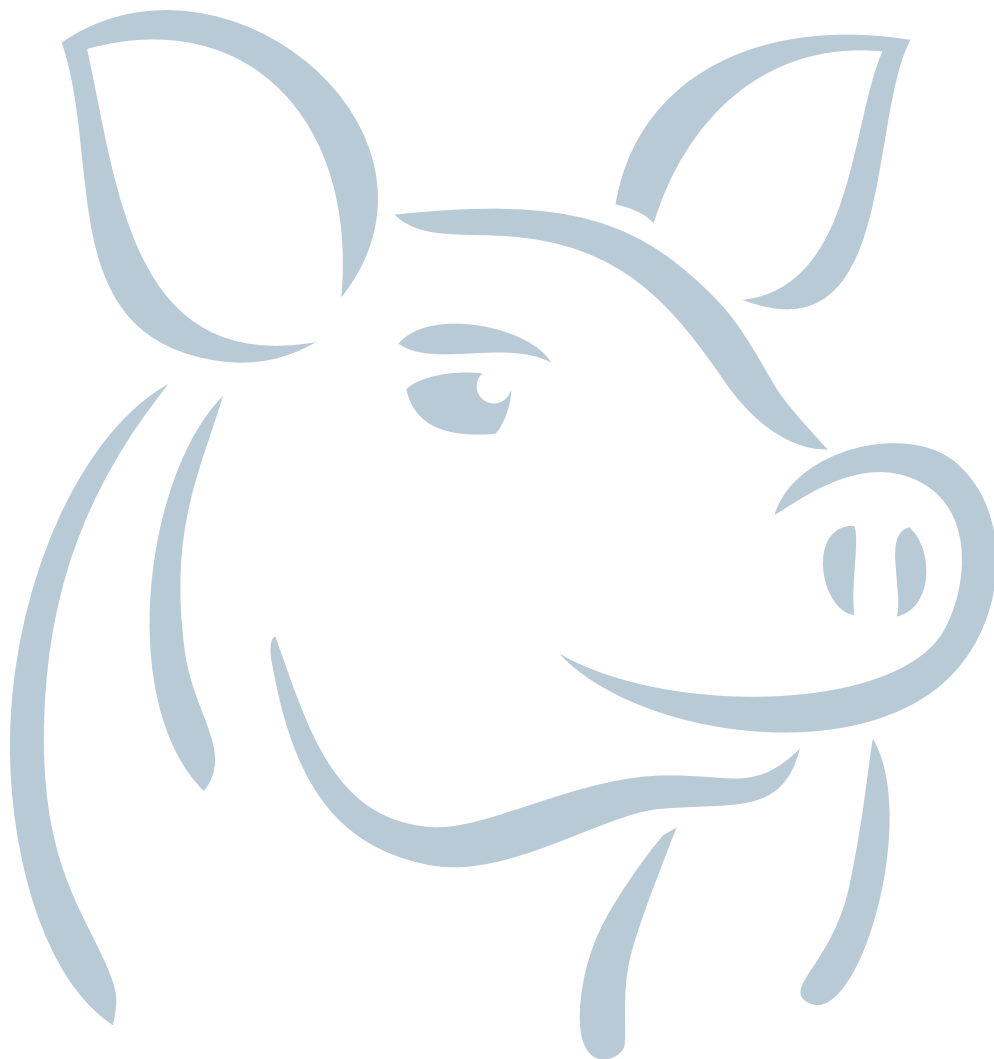


DANISH 
PORK MEAT



Kam

Side 31 - 41





DANISH 
PORK MEAT



Kam

Kam m/ben m/svær 1600 | 10800



Phone: +45 55 54 75 00
info@danishporkmeat.com
www.danishporkmeat.com

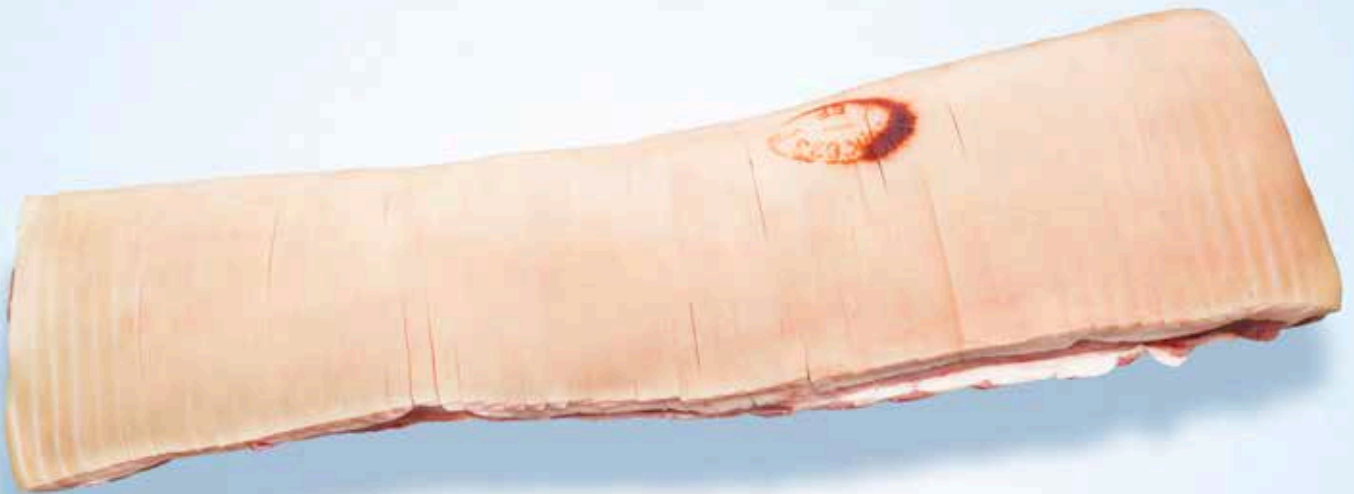


DANISH 
PORK MEAT



Kam

Ovnklar kam m/svær u/ben | 10805



Phone: +45 55 54 75 00
info@danishporkmeat.com
www.danishporkmeat.com



DANISH 
PORK MEAT



Kam

Kam m/ben u/svær 1601 | 10900



Phone: +45 55 54 75 00
info@danishporkmeat.com
www.danishporkmeat.com



DANISH 
PORK MEAT



Kam

Kamfilet 1606 | 10901



Phone: +45 55 54 75 00
info@danishporkmeat.com
www.danishporkmeat.com



DANISH 
PORK MEAT



Kam

Kamfilet 1669 | 10905



Phone: +45 55 54 75 00
info@danishporkmeat.com
www.danishporkmeat.com



DANISH 
PORK MEAT



Kam

Kamfilet 1660 | 10909



Phone: +45 55 54 75 00
info@danishporkmeat.com
www.danishporkmeat.com



DANISH 
PORK MEAT



Kam

Svinemørbrad | 11201



Phone: +45 55 54 75 00
info@danishporkmeat.com
www.danishporkmeat.com



DANISH 
PORK MEAT



Kam

Kamben | 11424



Phone: +45 55 54 75 00
info@danishporkmeat.com
www.danishporkmeat.com



DANISH 
PORK MEAT



Kam

Kampæk m/svær | 11503



Phone: +45 55 54 75 00
info@danishporkmeat.com
www.danishporkmeat.com

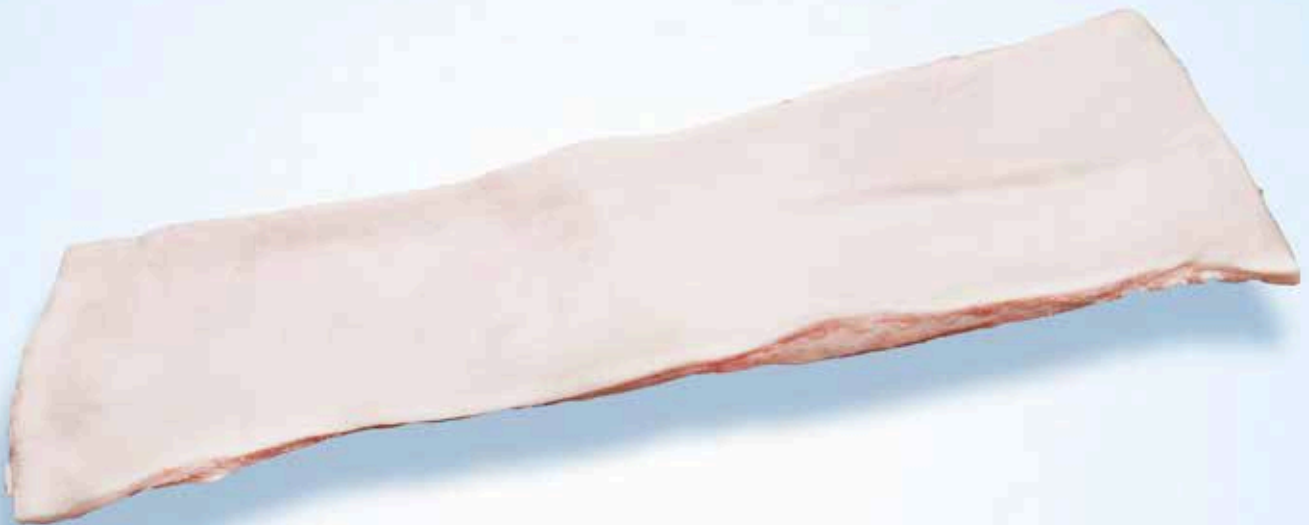


DANISH 
PORK MEAT



Kam

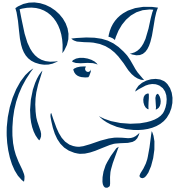
Kampæk u/svær | 11504



Phone: +45 55 54 75 00
info@danishporkmeat.com
www.danishporkmeat.com

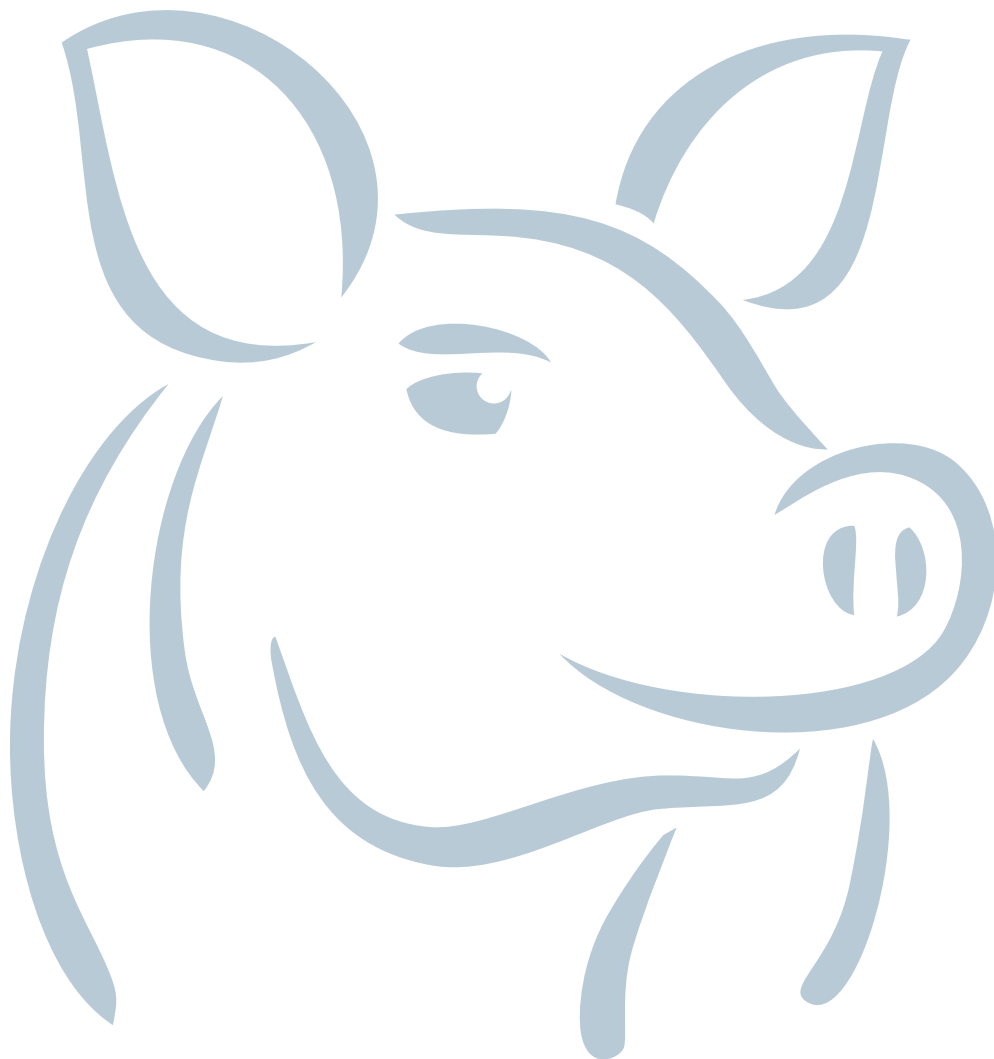


DANISH
PORK MEAT



Bryst

Side 42 - 54





DANISH 
PORK MEAT



Bryst

Bryst 1801 m/ben m/svær | 10403



Phone: +45 55 54 75 00
info@danishporkmeat.com
www.danishporkmeat.com



DANISH 
PORK MEAT



Bryst

Bryst 1817 u/ben m/svær | 10408



Phone: +45 55 54 75 00
info@danishporkmeat.com
www.danishporkmeat.com



DANISH 
PORK MEAT



Bryst

Bryst 1848 u/ben u/svær | 10410



Phone: +45 55 54 75 00
info@danishporkmeat.com
www.danishporkmeat.com



DANISH 
PORK MEAT



Bryst

Topper m/svær m/ben | 10411



Phone: +45 55 54 75 00
info@danishporkmeat.com
www.danishporkmeat.com



DANISH 
PORK MEAT



Bryst

Topper m/svær u/ben | 10416



Phone: +45 55 54 75 00
info@danishporkmeat.com
www.danishporkmeat.com



DANISH 
PORK MEAT



Bryst

Kogeside m/svær u/ben | 10502



Phone: +45 55 54 75 00
info@danishporkmeat.com
www.danishporkmeat.com



DANISH 
PORK MEAT



Bryst

Stegeside m/svær u/ben | 10602



Phone: +45 55 54 75 00
info@danishporkmeat.com
www.danishporkmeat.com



DANISH 
PORK MEAT



Bryst

Ribbensteg Rids | 10506



Phone: +45 55 54 75 00
info@danishporkmeat.com
www.danishporkmeat.com



DANISH
PORK MEAT



Bryst

Stegeside m/ben m/svær | 10600



Phone: +45 55 54 75 00
info@danishporkmeat.com
www.danishporkmeat.com



DANISH 
PORK MEAT



Bryst

Stegeside m/ben u/svær | 10605



Phone: +45 55 54 75 00
info@danishporkmeat.com
www.danishporkmeat.com



DANISH 
PORK MEAT



Bryst

Slag m/ben m/svær | 10700



Phone: +45 55 54 75 00
info@danishporkmeat.com
www.danishporkmeat.com

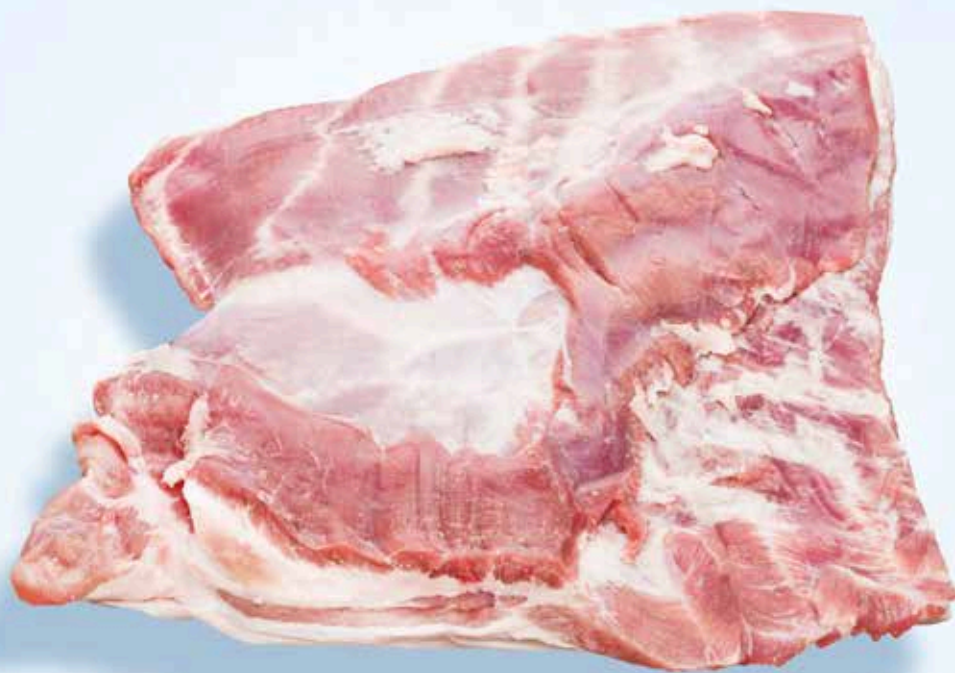


DANISH 
PORK MEAT



Bryst

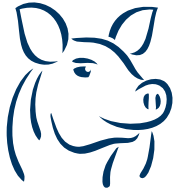
Slag u/ben u/svær | 10703



Phone: +45 55 54 75 00
info@danishporkmeat.com
www.danishporkmeat.com

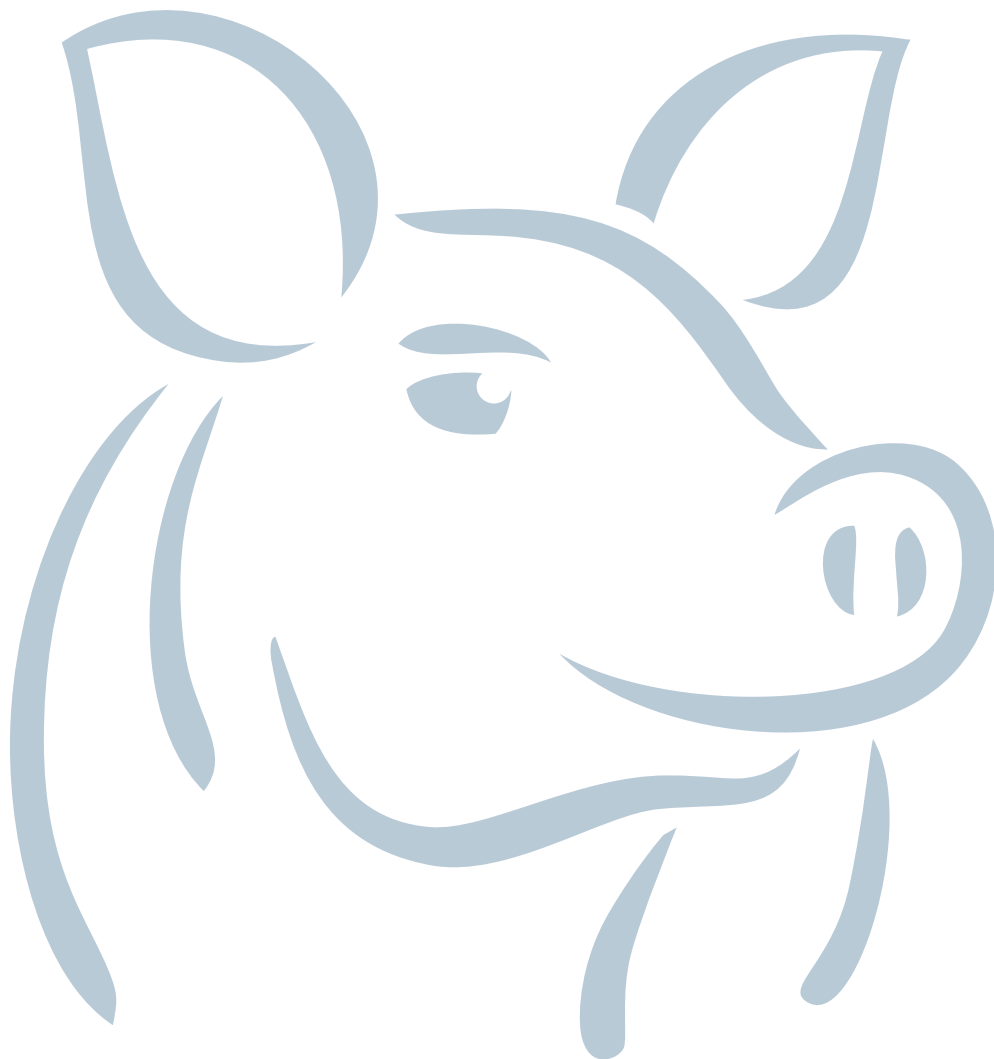


DANISH
PORK MEAT



Midterstykker

Side 55 - 56





DANISH 
PORK MEAT



Midterstykker

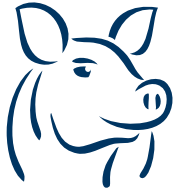
Mellemstyk m/svær m/ben | 10400



Phone: +45 55 54 75 00
info@danishporkmeat.com
www.danishporkmeat.com

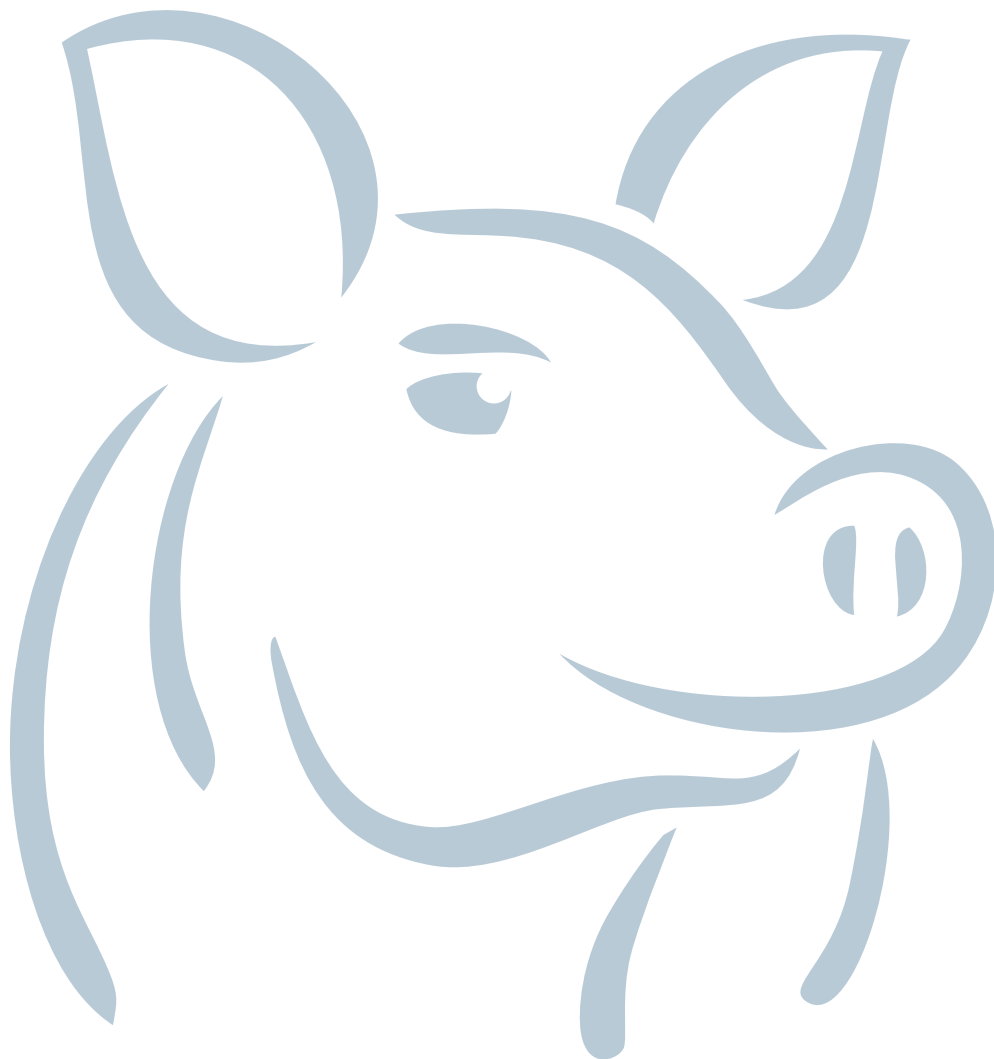


DANISH
PORK MEAT



Produktionskød

Side 57 - 70





DANISH 
PORK MEAT



Produktionskød

Trimming 6-8 % | 11303



Phone: +45 55 54 75 00
info@danishporkmeat.com
www.danishporkmeat.com



DANISH 
PORK MEAT



Produktionskød

Trimming 80-20 % | 11306



Phone: +45 55 54 75 00
info@danishporkmeat.com
www.danishporkmeat.com



DANISH 
PORK MEAT



Produktionskød

Trimming 70-30 % | 11308



Phone: +45 55 54 75 00
info@danishporkmeat.com
www.danishporkmeat.com



DANISH 
PORK MEAT



Produktionskød

Mellemgulv | 11317



Phone: +45 55 54 75 00
info@danishporkmeat.com
www.danishporkmeat.com



DANISH 
PORK MEAT



Produktionskød

Mellemgulv | 11317



Phone: +45 55 54 75 00
info@danishporkmeat.com
www.danishporkmeat.com



DANISH 
PORK MEAT



Produktionskød

Bovsnit m/svær | 11406



Phone: +45 55 54 75 00
info@danishporkmeat.com
www.danishporkmeat.com



DANISH 
PORK MEAT



Produktionskød

Bovsnit u/svær | 11408



Phone: +45 55 54 75 00
info@danishporkmeat.com
www.danishporkmeat.com



DANISH 
PORK MEAT



Produktionskød

Maxi snit m/svær | 11410



Phone: +45 55 54 75 00
info@danishporkmeat.com
www.danishporkmeat.com



DANISH 
PORK MEAT



Produktionskød

Bugstrimler | 11508



Phone: +45 55 54 75 00
info@danishporkmeat.com
www.danishporkmeat.com



DANISH 
PORK MEAT



Produktionskød

Kæbeklump | 11412



Phone: +45 55 54 75 00
info@danishporkmeat.com
www.danishporkmeat.com



DANISH 
PORK MEAT



Produktionskød

Grisehoved | 11414



Phone: +45 55 54 75 00
info@danishporkmeat.com
www.danishporkmeat.com



DANISH 
PORK MEAT



Produktionskød

Afsværet spæk / Cuttingfat | 11502



Phone: +45 55 54 75 00
info@danishporkmeat.com
www.danishporkmeat.com



DANISH 
PORK MEAT



Produktionskød

Hoftekød | 11300



Phone: +45 55 54 75 00
info@danishporkmeat.com
www.danishporkmeat.com

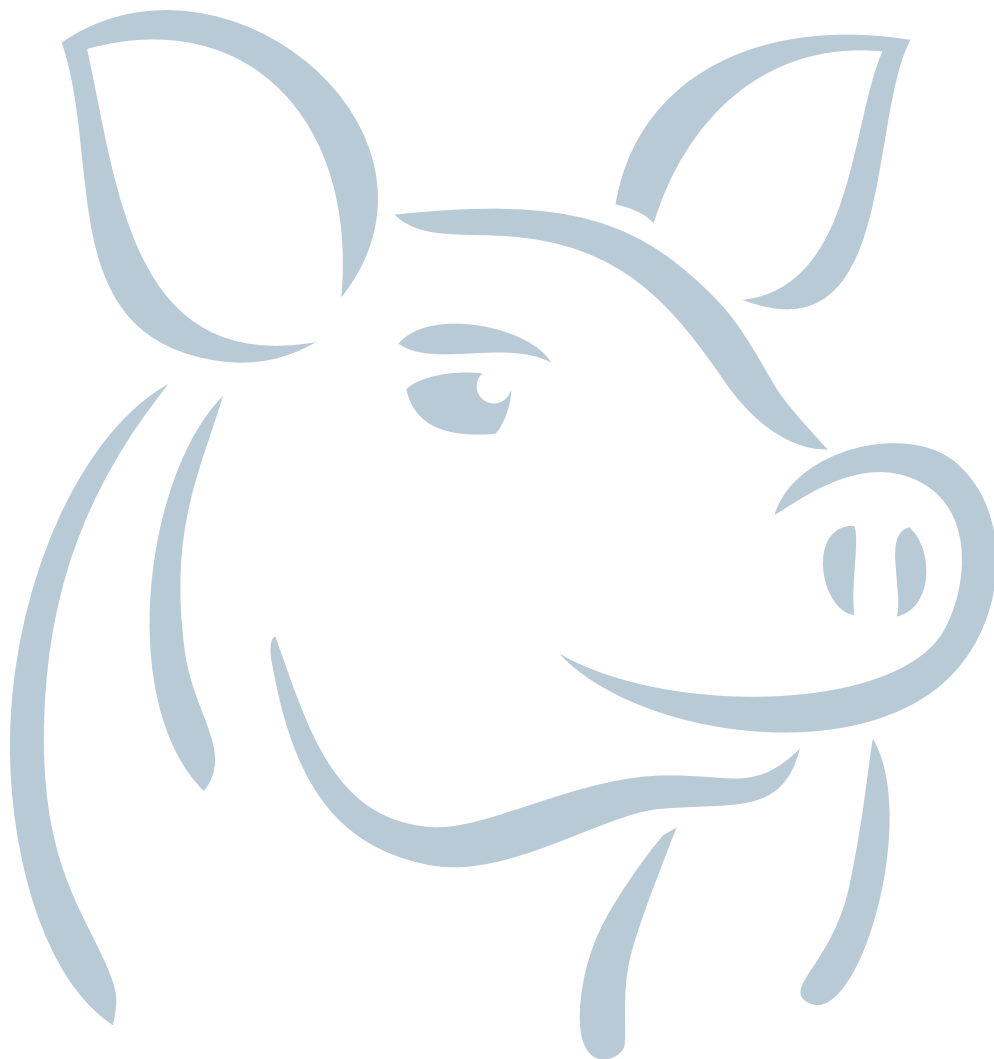


DANISH 
PORK MEAT



Indmad

Side 71 - 73





DANISH
PORK MEAT



Indmad

Lever | 11404



Phone: +45 55 54 75 00
info@danishporkmeat.com
www.danishporkmeat.com



DANISH 
PORK MEAT



Indmad

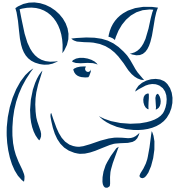
Hjerter | 11405



Phone: +45 55 54 75 00
info@danishporkmeat.com
www.danishporkmeat.com

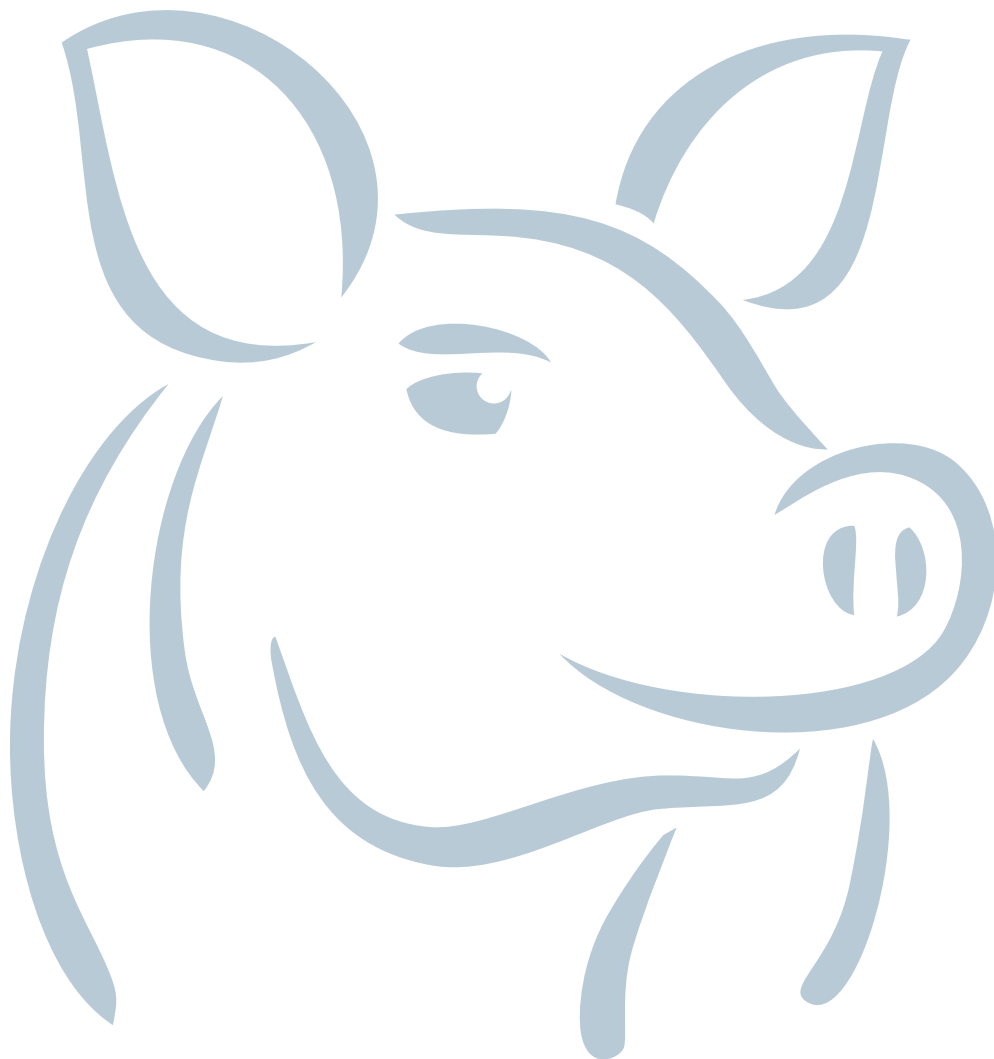


DANISH
PORK MEAT



Specialprodukter

Side 74 - 100





DANISH 
PORK MEAT



Specialprodukter

Spoleben | 10052



Phone: +45 55 54 75 00
info@danishporkmeat.com
www.danishporkmeat.com



DANISH 
PORK MEAT



Specialprodukter

Skink Klump | 10200



Phone: +45 55 54 75 00
info@danishporkmeat.com
www.danishporkmeat.com



DANISH
PORK MEAT



Specialprodukter

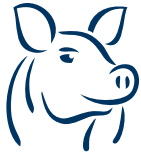
Skink Klump PAD | 10205



Phone: +45 55 54 75 00
info@danishporkmeat.com
www.danishporkmeat.com



DANISH
PORK MEAT



Specialprodukter

Skinkeinderlår u/kap | 10302



Phone: +45 55 54 75 00
info@danishporkmeat.com
www.danishporkmeat.com



DANISH 
PORK MEAT



Specialprodukter

Skinkeinderlår u/kap PAD | 10305



Phone: +45 55 54 75 00
info@danishporkmeat.com
www.danishporkmeat.com



DANISH
PORK MEAT



Specialprodukter

Stegeflæsk i skiver | 10604



Phone: +45 55 54 75 00
info@danishporkmeat.com
www.danishporkmeat.com



DANISH 
PORK MEAT



Specialprodukter

Ovnklar Kam m/svær u/ben | 10805



Phone: +45 55 54 75 00
info@danishporkmeat.com
www.danishporkmeat.com



DANISH 
PORK MEAT



Specialprodukter

Kamfilet 1606 | 10901



Phone: +45 55 54 75 00
info@danishporkmeat.com
www.danishporkmeat.com



DANISH 
PORK MEAT



Specialprodukter

Kamfilet 1669 | 10905



Phone: +45 55 54 75 00
info@danishporkmeat.com
www.danishporkmeat.com



DANISH 
PORK MEAT



Specialprodukter

Kamfilet 1660 | 10909



Phone: +45 55 54 75 00
info@danishporkmeat.com
www.danishporkmeat.com



DANISH 
PORK MEAT



Specialprodukter

Fläskyttefile Mörad | 10918



Phone: +45 55 54 75 00
info@danishporkmeat.com
www.danishporkmeat.com



DANISH 
PORK MEAT



Specialprodukter

Fläskyttefile Mörad / Krydret | 10920



Phone: +45 55 54 75 00
info@danishporkmeat.com
www.danishporkmeat.com



DANISH 
PORK MEAT



Specialprodukter

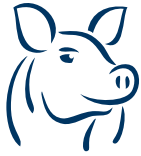
Fläskyttefile Mörad / Krydret | 10920



Phone: +45 55 54 75 00
info@danishporkmeat.com
www.danishporkmeat.com



DANISH
PORK MEAT



Specialprodukter

Fläskyttefile Mörad / Krydret | 10920



Phone: +45 55 54 75 00
info@danishporkmeat.com
www.danishporkmeat.com



DANISH 
PORK MEAT



Specialprodukter

Fläskyttefile Mörad / Krydret | 10920



Phone: +45 55 54 75 00
info@danishporkmeat.com
www.danishporkmeat.com



DANISH 
PORK MEAT



Specialprodukter

Bit Pack Kotlett | 10914



Phone: +45 55 54 75 00
info@danishporkmeat.com
www.danishporkmeat.com



DANISH 
PORK MEAT



Specialprodukter

Nakkefilet 1327 | 11107



Phone: +45 55 54 75 00
info@danishporkmeat.com
www.danishporkmeat.com

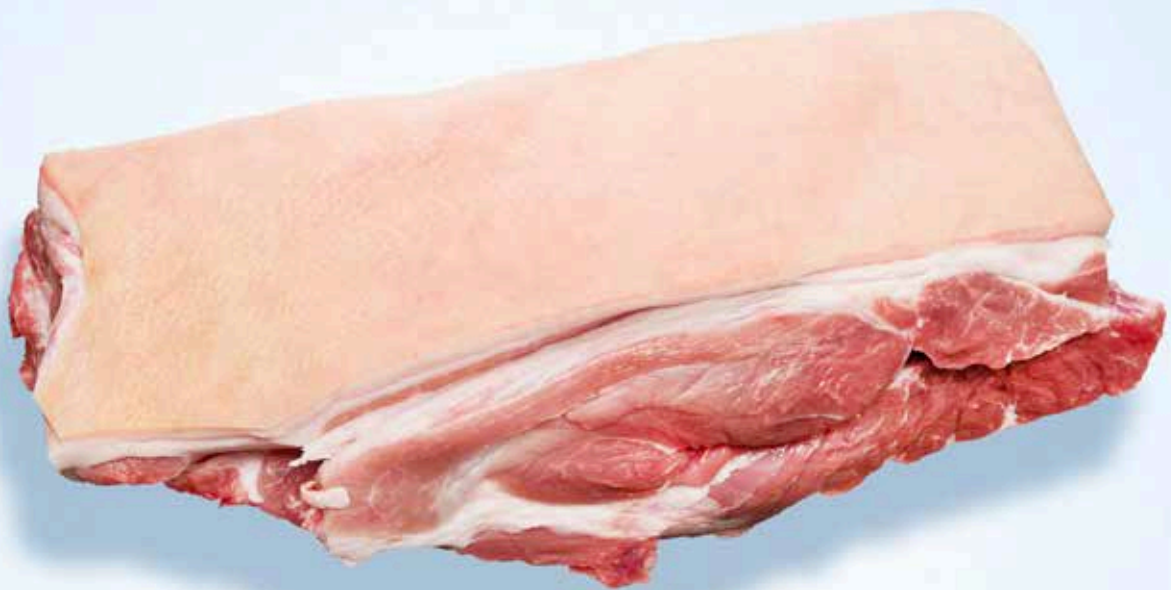


DANISH 
PORK MEAT



Specialprodukter

Nakkesteg | 11101



Phone: +45 55 54 75 00
info@danishporkmeat.com
www.danishporkmeat.com



DANISH
PORK MEAT



Specialprodukter

Nakkefilet 1320 | 11105



Phone: +45 55 54 75 00
info@danishporkmeat.com
www.danishporkmeat.com



DANISH 
PORK MEAT



Specialprodukter

Ribbensteg Rids | 10506



Phone: +45 55 54 75 00
info@danishporkmeat.com
www.danishporkmeat.com



DANISH 
PORK MEAT



Specialprodukter

Bit Pack Karre | 11112



Phone: +45 55 54 75 00
info@danishporkmeat.com
www.danishporkmeat.com



DANISH
PORK MEAT



Specialprodukter

Svinemørbrad | 11201



Phone: +45 55 54 75 00
info@danishporkmeat.com
www.danishporkmeat.com



DANISH
PORK MEAT



Specialprodukter

Svinemørbrad / Krydret | 11210



Phone: +45 55 54 75 00
info@danishporkmeat.com
www.danishporkmeat.com



DANISH 
PORK MEAT



Specialprodukter

Haler | 11403



Phone: +45 55 54 75 00
info@danishporkmeat.com
www.danishporkmeat.com



DANISH 
PORK MEAT



Specialprodukter

Fortæer | 11428



Phone: +45 55 54 75 00
info@danishporkmeat.com
www.danishporkmeat.com



DANISH 
PORK MEAT



Specialprodukter

Bagtæer | 11429



Phone: +45 55 54 75 00
info@danishporkmeat.com
www.danishporkmeat.com