



holiday apartment

# Brunsbachtal

guest manual



# Hallo Welcome

Dear guests,

We are very happy that you have decided to stay in our holiday apartment. We hope you will have a wonderful time and enjoy the peace and beauty of our surroundings.

# Contents

## Arrival

This is where you will find the most important information, from shopping, Wi-Fi and TV to bicycles, rubbish and smoking.

## The apartment

This chapter is designed to help you find your way around the apartment more easily.

## The garden

An invitation to relax and savour the moment.

## Relaxation

To help you pass the time, we have put together a small overview of leisure activities, excursion destinations and gastronomic offers with our partner 'Das Bergische'. You can also find tips and recipes here.

## Information

If something does hurt, you can get help here.

## Bye and see you soon

The best time of the year is coming to an end, here you can find out what to bear in mind when leaving.

# A

## Arrival

The nearest shops are a 5-minute walk from the apartment, the Penny supermarket is open from Monday to Saturday from 7:00 a.m. to 10:00 p.m. An Edeka supermarket, a pharmacy and a bakery can be reached in 5 more minutes on foot.

Opening hours:

Penny	Mon-Sat:	7 a.m. to 10 p.m.
Pharmacy	Mon-Sat:	8:30 a.m. to 1 p.m. 2:30 p.m. to 6:30 p.m.
	Wed. and Sat.:	afternoon closed
Edeka	Mon-Sat: 7	a.m. to 10 p.m.
Baker	Mon. - Fr.:	06:00 a.m. to 06:00 p.m.
	Sa.:	06:00 a.m. to 05:00 p.m.
	So.:	08:00 a.m. to 11:00 a.m.
Lotto	Mo. - Sa.:	08:30 a.m. to 12:30 p.m.
	Mo. - Fr.:	02:30 p.m. to 06:00 p.m.



WLAN-Name:  
VSZboxUG

Passwort:  
blumen#XXI



## Wi-Fi and cable TV

With the above login information, you can register on the guest Wi-Fi or simply scan the QR code. The Wi-Fi is available 24/7. The Wi-Fi devices connected to the guest access can communicate with each other.

The 'FAV' button (see figure) takes you to the favourites list, where you can directly access the following stations:

- |                   |                  |
|-------------------|------------------|
| ⊗ ARD - Das Erste | ⊗ RTLZWEI        |
| ⊗ ZDF             | ⊗ 3sat           |
| ⊗ RTL             | ⊗ WDR Köln       |
| ⊗ SAT.1           | ⊗ WDR Wuppertal* |
| ⊗ ProSieben       | ⊗ N24 Doku       |
| ⊗ VOX             | ⊗ Super RTL      |
| ⊗ kabel eins      | ⊗ KiKA           |



(\*local TV-station - Bergisches Land)

# bicycles, rubbish and more

---

For the duration of your stay, you are welcome to park your bicycles and other accessories, such as your bicycle rack, in the garden shed and on the parking area next to the house. **We do not assume any liability for the stored equipment and bicycles.** Please secure your bicycles as you are accustomed to. Should you require tools during your stay, we will be happy to assist you. In case of 'major breakdowns' with your bicycle, we recommend:

RR Bikes

Egener Straße 11

51688 Wipperfürth

+49 2267 6550 868

Info@rr-bikes.de

www.rr-bikes.de

Summer opening hours:

Monday to Friday:

9:00 a.m. to 1:00 p.m. and

2:00 p.m. to 6:00 p.m.

Wednesday: closed

Saturday: 9:00 a.m. to 1:00 p.m.



---

## Smoking, disposing of rubbish, what else needs to be considered

Out of consideration for guests who wish to rent the apartment after you, smoking is not allowed in the apartment. We ask that you smoke either on the terrace or under the canopy in front of the front door. Furthermore, we ask that you dispose of your cigarette butts regularly and properly.



Unfortunately, dogs are not allowed.  
Thank you for your understanding.

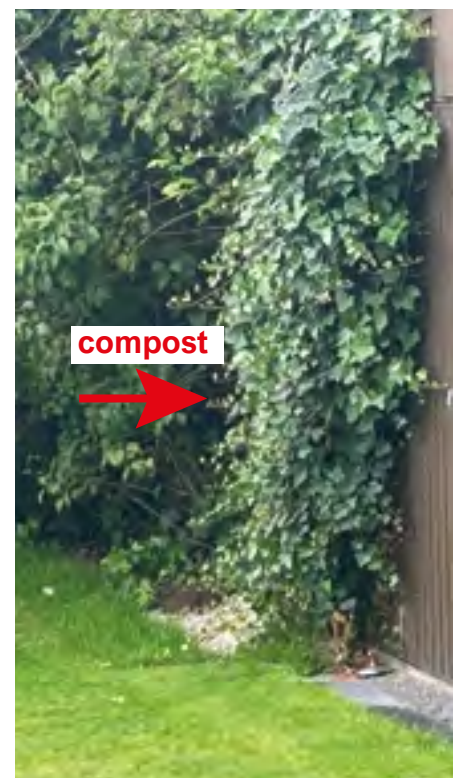
We in the Bergisches Land separate our rubbish into residual waste, paper, recyclables and compost, as well as glass. In the kitchen under the fridge, you will find ways to separate your rubbish. There is a pull-out bin for residual waste and recyclables. Please collect the glass in the basket next to it. There is a separate basket for paper in the hallway.

For compost (organic waste), you will find a compost heap to the left of the garden shed, hidden by the ivy and lilac, by the white paving stones. On the way to the apartment, you passed our rubbish cupboard, where you can dispose of residual waste, paper waste and the yellow bag from left to right.

The yellow sack is for all packaging made of film, plastic, aluminium, metal (cans), etc.



**Thank you for your consideration!**

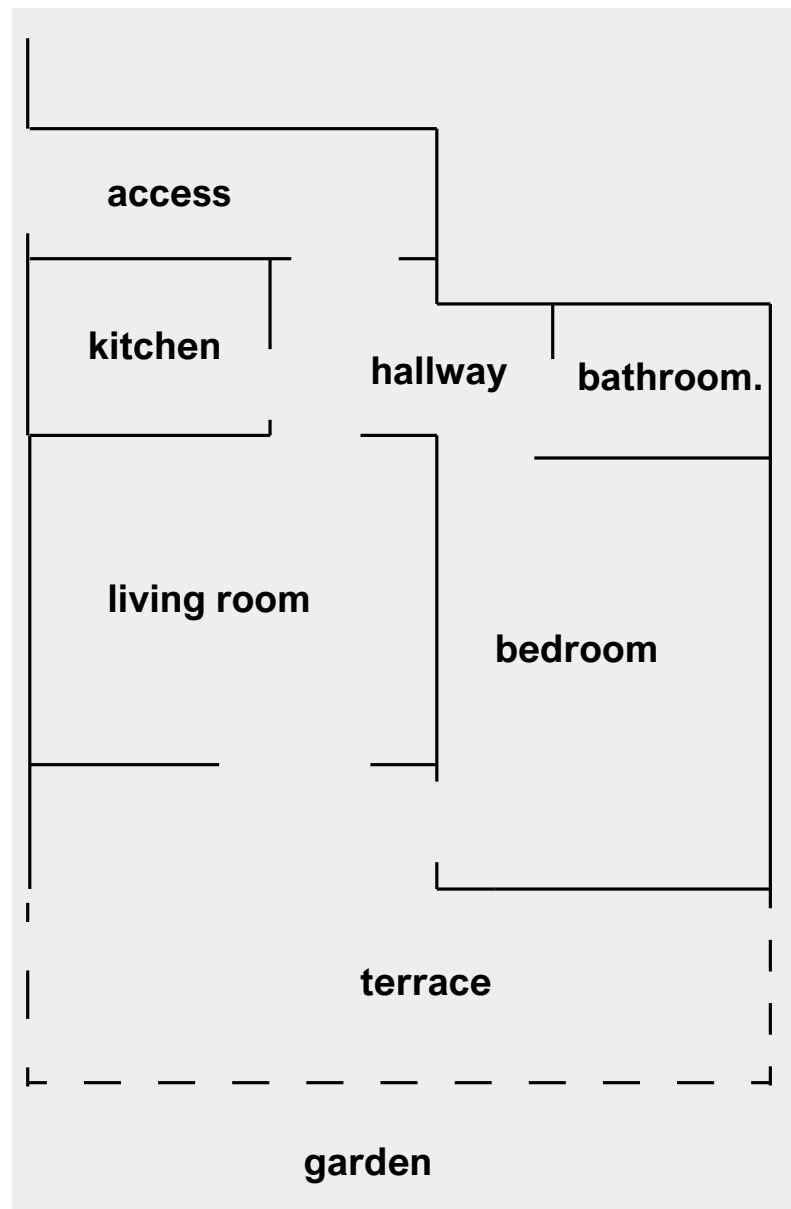








## The apartment



The **kitchen** is equipped with the following: a dishwasher, an electric stove with a ceramic hob and a convection oven, a toaster, a Senseo pod coffee machine and a kettle. The kitchen is also equipped with the usual cooking utensils, a set of cutlery for 12 people, coffee mugs and the usual kitchen aids. Dish towels, dishcloths, washing-up liquid and **a dishwasher tab for each night are provided** with every booking.

**If you need anything else, require assistance, or if something is defective, please speak to us – we will find a solution.**



The picture above should help you find your way around the kitchen.

In the kitchen, you will find a modern dishwasher. We recommend the following setting to ensure good washing results and help the environment.



1. - press 1 time  
(switch on)

2. - press 1 time  
(automatic  
programme)

3. - press 1 time  
(start)

# living and sleeping area

---

In the **living room**, you will find everything you need to make your stay as relaxing as possible, in addition to the TV. This includes plates, cups and glasses, as well as BBQ accessories with a 50 mbar pressure regulator for gas bottles and camping cartridges. We have also provided you with a small selection of books and games.

The beds in the **bedroom** are already made on the day of arrival, the towels are ready – your holiday can begin. If you need to take care of something quickly while on holiday or want to use the apartment for 'mobile working' or as a mechanic's apartment, a desk is available in the bedroom. We keep a hairdryer for you in the top drawer of the bedroom wardrobe.



We are happy to replace  
towels and dryers as needed.



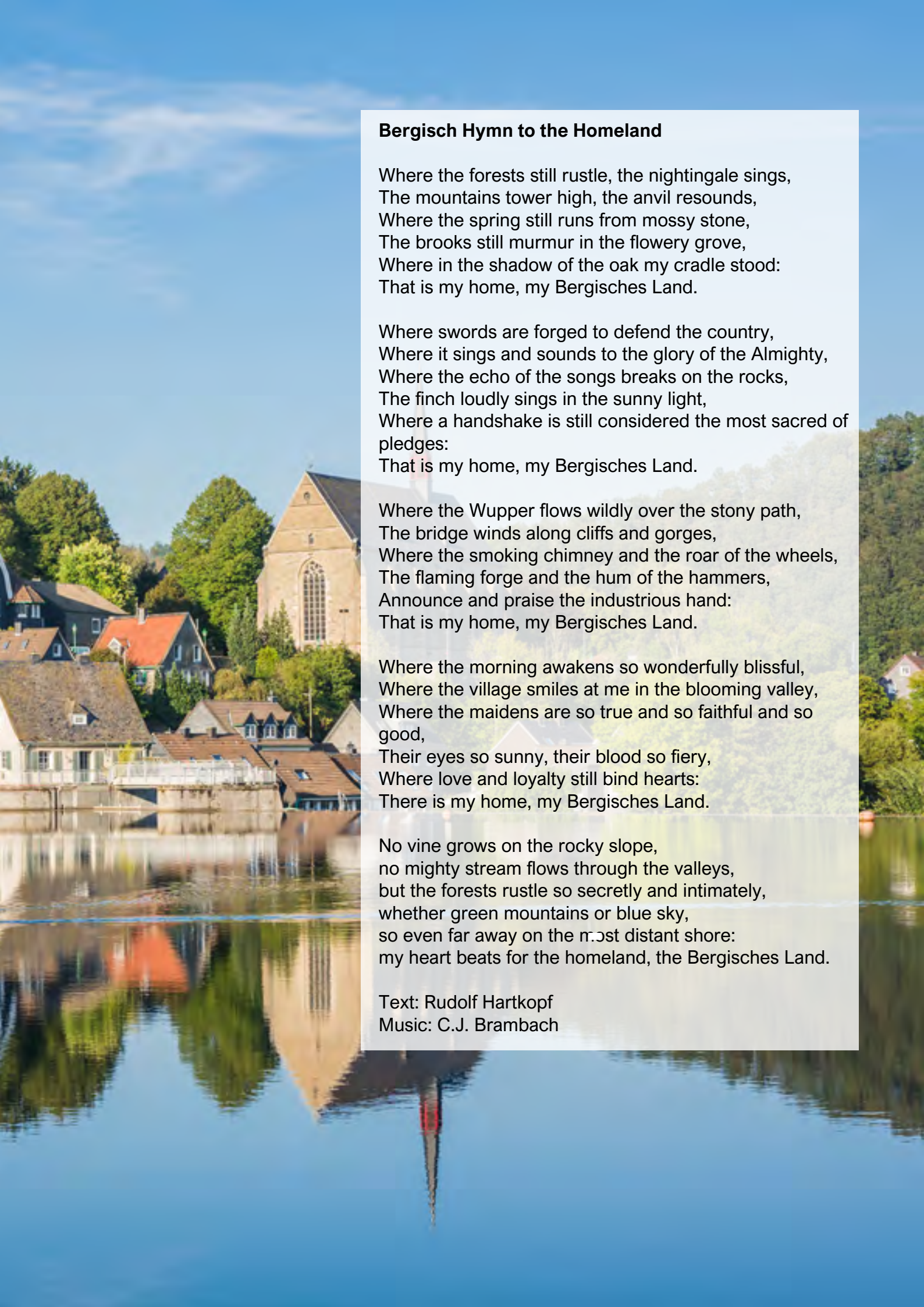
A little journey is enough to renew ourselves  
and the world. (Kurt Tucholsky)



From sofa  
to sofa bed  
in three steps





A scenic view of a village with a church and houses reflected in a river. The church has a large, arched window and a steep roof. The houses have red and grey roofs. The river is calm, and the sky is blue with some clouds.

## Bergisch Hymn to the Homeland

Where the forests still rustle, the nightingale sings,  
The mountains tower high, the anvil resounds,  
Where the spring still runs from mossy stone,  
The brooks still murmur in the flowery grove,  
Where in the shadow of the oak my cradle stood:  
That is my home, my Bergisches Land.

Where swords are forged to defend the country,  
Where it sings and sounds to the glory of the Almighty,  
Where the echo of the songs breaks on the rocks,  
The finch loudly sings in the sunny light,  
Where a handshake is still considered the most sacred of  
pledges:  
That is my home, my Bergisches Land.

Where the Wupper flows wildly over the stony path,  
The bridge winds along cliffs and gorges,  
Where the smoking chimney and the roar of the wheels,  
The flaming forge and the hum of the hammers,  
Announce and praise the industrious hand:  
That is my home, my Bergisches Land.

Where the morning awakens so wonderfully blissful,  
Where the village smiles at me in the blooming valley,  
Where the maidens are so true and so faithful and so  
good,  
Their eyes so sunny, their blood so fiery,  
Where love and loyalty still bind hearts:  
There is my home, my Bergisches Land.

No vine grows on the rocky slope,  
no mighty stream flows through the valleys,  
but the forests rustle so secretly and intimately,  
whether green mountains or blue sky,  
so even far away on the most distant shore:  
my heart beats for the homeland, the Bergisches Land.

Text: Rudolf Hartkopf  
Music: C.J. Brambach

# G

## The garden,

Your place to relax and unwind, but also to have a barbecue and let the evening come to a cosy close. You are welcome to use the gas barbecue; you will find the accessories in the living room cupboard.







On a bright summer morning,  
I walk around in the garden.  
The flowers whisper and speak,  
but I walk silently.  
Heinrich Heine

We kindly ask you to make sure that the cushions are put back inside  
and the sunshade is closed after use.









# R

Here you will find a small selection of destinations that you can easily reach within an hour or an hour and a half. Our partner 'das Bergische' offers you a variety of leisure and gastronomic activities via the flyer on the next page. <https://erlebnisapp.dasbergische.de>

## Relaxation

### 1 - Cologne

- \* Cologne Cathedral
- \* Cologne Zoo
- \* Old Town restaurants
- \* Rhine cruises

<https://www.k-d.com/de>

### 2 - Bergisch Gladbach

- \* Bensberg Castle
- \* Altenberg Cathedral

### 3 - Solingen

- \* Castle-Burg
- \* Müngsten Bridge with the Bridgepark

### 4 - Remscheid

- \* Röntgen Museum
- <https://roentgenmuseum.de>

### 5 - Wuppertal

- \* Wuppertal Suspension Railway
- \* Wuppertaler Zoo

### 6 - Hagen

- \* Open-Air Museum
- <https://www.lwl-freilichtmuseum-hagen.de>

### 7 - Bochum

- \* Bochum Planetarium
- <https://www.planetarium-bochum.de>
- \* German Mining Museum Bochum
- <https://www.bergbaumuseum.de>

### 8 - Essen

- \* Villa-Hügel (Krupp)
  - \* Zollverein UNESCO World Heritage Site
- <https://www.zollverein.de>

### 9 - Düsseldorf

- (state capital)
- \* Benrath Palace
  - \* Little Tokyo
  - \* old town

### 10 - Aachen

- \* Aachen Cathedral

### 11 - Roermond (NL)

- \* Outlet-Shopping

### 12 - Xanten

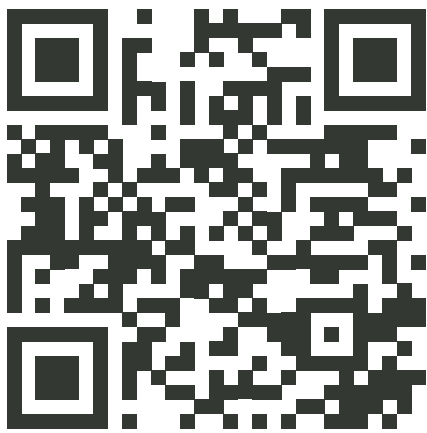
- \* archaeological park
- <https://apx.lvr.de>



# Das Bergische

## APP INS BERGISCHE

DER REISEFÜHRER  
FÜRS SMARTPHONE



[erlebnisapp.dasbergische.de](http://erlebnisapp.dasbergische.de)



## Bike tours

We also have a book of relaxing cycle tours through the Bergisch Land region for you to enjoy. All GPS data for the tours can be downloaded here or by scanning the QR code.



GPS data for tours



## RÄTSELTOUREN IM BERGISCHEN LAND

JETZT ONLINE  
BUCHEN UND  
HEUTE STARTEN

Solingen Schaberg

ATTENTAT AUF MÜNGSTEN  
VERHINDERT DAS GROBE DESASTER

Solingen Müngsten

DIE AUFNAHMEPRÜFUNG  
EIN RISKANTES SPIEL UM DEN GOLDENEN NIET

Solingen Gräfrath

DAS STRAßENFEST DES GRAUENS  
TONI UND DIE RACHE DER CLOWNS

Altenberger Dom

DAS GEHEIME MANUSKRIFT  
UND DIE VERSCHWUNDENE ROSE

Solingen Ohligs

DAS SPIEL UMS LEBEN  
EINE PARTYNACHT, DIE ALLES VERÄNDERT HAT

Rösrath Overath

DER FLUCH VOM LÜDERICH  
VOM PECH VERFOLGT

DIE WEGFINDER  
RÄTSELERLEBNISSE



QR-Code scannen  
buchen, starten  
oder verschenken

diewegfinder.de

## Grilled vegetables in marinade

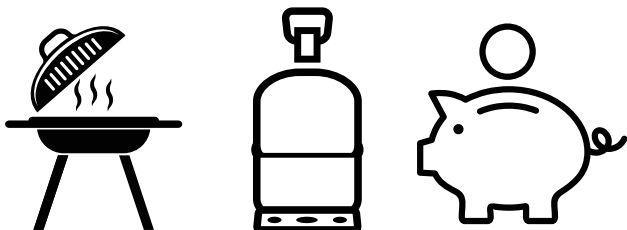
### vegetables

- 1 red pepper
- 1 large red onion
- 1 courgette
- 3-5 large mushrooms
- 1 small aubergine

### marinade

- 2 garlic cloves
- 2 tbsp honey
- 2 tbsp oil  
(sunflower or olive)
- 4 tbsp balsamic vinegar
- 1 tbsp herbes de Provence
- 1 tsp curry powder
- 1 tbsp soy sauce
- sweet paprika
- black pepper

In a medium-sized bowl, press the garlic cloves and mix with the remaining ingredients to form a marinade. Cut the washed vegetables into bite-sized pieces and add to the marinade. Now marinate the vegetables for at least 30 minutes in the fridge. Grill the vegetables directly in a vegetable basket (or grill pan with holes) at medium heat (180°C) for about 15-25 minutes. Serve with baked potatoes with herb quark or poultry.



**BBQ gas money box**

Dear guests,

Our holiday apartment has a gas barbecue that you are welcome to use. To spread the gas costs fairly, we have set up a small collection box. If you use the barbecue, we would be pleased to receive a voluntary contribution to the gas costs.

Thank you and enjoy your barbecue!





## BBQ chicken on beer can

### Ingredients

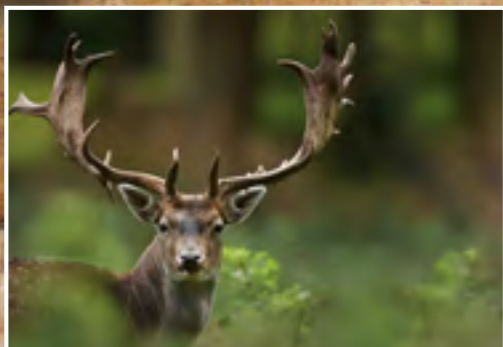
1 chicken (1 kg to 1.4 kg)  
2 tbsp chicken seasoning  
(e.g. JustSpices Curry Chicken Spice)  
2 tbsp olive oil  
1 can of beer  
(GUINNESS, malt - depending on your preference)

Mix the chicken seasoning and olive oil to make a marinade and marinate the chicken. Leave the marinated chicken to stand in the fridge overnight. The next day, place the chicken on the opened beer can and grill at 180° to 200° for about 60-90 minutes. In our experience, a dark, malty beer will enhance the flavour.

It goes well, for example, with **grilled vegetables** in a **marinade**, jacket potatoes with herb quark or a baguette with herb butter.

## *Regionale Qualität vom Bauernhof Kempe*

*Eier, Wild- und Geflügelspezialitäten aus dem Bergischen Land.*



**Frische vom Bauernhof**



**Kempe**

Buchholzen 1-3 • 42897 Remscheid • Tel.: 02191-997043 • [www.bauernhof-kempe.de](http://www.bauernhof-kempe.de)  
[info@bauernhof-kempe.de](mailto:info@bauernhof-kempe.de)





## Typically Bergisch: the Bergisch coffee table

The traditional Bergisch coffee table and the typical German 'afternoon coffee' are fundamentally different: the 'Bergisch coffee table' serves both sweet and savoury delicacies, which means that a wide variety of dishes are served. In the past, everything the farm had to offer was served on special occasions. Even then, the townspeople appreciated this and were often guests in the Bergisches Land.

A pot of **coffee** (traditionally made in a 'Dröppelminna' pot), tea or hot chocolate, a freshly baked '**Bergische Waffel**' (a type of **waffle**) with rice pudding, cinnamon and sugar, a slice each of **black and farmhouse bread**, **raisin bread**, a slice of **cheese**, **butter**, a small selection of **cold cuts** from Bergisch butchers, **plum jam** and **quark**, **sugar biscuits** and **burger pretzels**, as well as homemade **sand cake** - that is the **Bergisch coffee table**.

## Bergisch waffles

### Ingredients

250 g butter

100 g sugar

1 sachet vanilla sugar

6 eggs

flavouring

(rum, lemons, butter vanilla)

400 g flour

100 g cornflour

1 sachet baking powder

0.5 l milk

Mix all ingredients to a dough using a mixer and bake in a waffle iron.



**Handgemachte Gebäckspezialitäten  
aus dem Bergischen Land**

**Bergische Zwieback Manufaktur**  
Wermelskirchener Str. 2 • 42659 Solingen / **Schloß Burg**  
Telefon 0212 / 41024 • [info@bergischerzwieback.de](mailto:info@bergischerzwieback.de)



[www.bergischerzwieback.de](http://www.bergischerzwieback.de)







## important information

### emergency numbers

- 112** - Fire brigade and ambulance service  
**110** - Police  
**116 117** - Emergency number for the  
GP on-call service

### out-of-hours service Wipperfürth at

HELIOS Klinik Wipperfürth  
Alte Kölner Straße 9  
51688 Wipperfürth

### Opening hours

Wed, Fri: 4 - 8 p.m.  
Sat, Sun, holidays, as well as on 24/12, 31/12 and Rose  
Monday: 10 a.m. - 2 p.m. and 4 - 8 p.m.

### Emergency pharmacy

<https://www.oberbergische-apotheke.de/notdienst>

### Hospitals

HELIOS Klinik Wipperfürth  
Alte Kölner Straße 9  
51688 Wipperfürth  
+49 2267 8890

### Sana-Klinikum Remscheid

Burger Straße 211  
42859 Remscheid  
+49 2191 13-0

### University Hospital Cologne

Kerpener Str. 62  
50937 Köln  
+49 221 478-0  
<https://www.uk-koeln.de>

### Dental emergency service

+49 1805 98 67 00

### paediatric emergency service

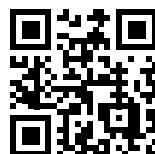
reachable via the Emergency number for the GP on-call  
service - 116 117

### City council

Castle town Hückeswagen  
Citizens' office on Bahnhofplatz  
Bahnhofplatz 14 ("glass hall")  
42499 Hückeswagen  
+49 2192 / 88-800  
<https://www.hueckeswagen.de>



Emergency  
pharmacy



University Hospital  
Cologne

# B

Every journey comes to an end, but the memories of it last forever.

**Bye for now...**

## Check-out



We kindly ask you to observe the **check-out time of 10:00 a.m.** – thank you. We do not offer late check-out.



Please collect used towels and place them on the shoe bench in the hallway.



Please remove the bed linen before leaving the holiday apartment and place it next to the towels.



Please switch off all equipment.



When you leave the apartment, we ask you to fill the dishwasher with the dishes and cutlery used and to start it. (see page 9)



Please dispose of rubbish in the rubbish bins: non-recyclable waste on the right, paper waste in the middle and yellow bag waste on the left. Put organic waste on the compost. (see page 7)



Please lock up and throw the keys through the letterbox in the front door.

## Guest book

Dear guests,

We are delighted to see your entries in our guestbook! Your impressions and experiences are very important to us.



**Thank you for being  
our guests!**

Have  
a safe  
journey  
home.

## One final request

If you need anything or require our assistance, please contact us directly. Otherwise, we would be grateful for your review.



## Payment methods



Transfer to:

Ilonka Voss

IBAN: DE27 5001 0517 5445 4451 70

BIC: INGDEFFXXX

Intended use: Name from xx.xx.xx to xx.xx.xx



Transfer to:

pay@fewo-brunsbachtal.de

(Ilonka Voß)

## Imprint

### **Publisher and responsible person:**

Ferienwohnung Brunsbachtal, Ilonka Voß, Blumenstr. 21, 42499 Hückeswagen

### **Edition:**

2. Edition 2025 (20250115)

### **Print:**

Digital PDF (online)

### **Copyright information:**

Ilonka Voß holds the copyright for this work. Some of the images used come from Adobe Stock and from DAS BERGISCHE GmbH and are subject to the respective licence conditions.

### **Contact details:**

Info@fewo-brunsbachtal.de • www.fewo-brunsbachtal.de

### **Picture credits:**

- \*AdobeStock\_458934559.jpeg\*: © Adobe Stock / [Majonit]

- \*csm\_Das\_Bergische-2018-319-Neuemuehle\_\_Wermelskirchen\_b02d24522e.jpg.webp\*: © DAS BERGISCHE GmbH