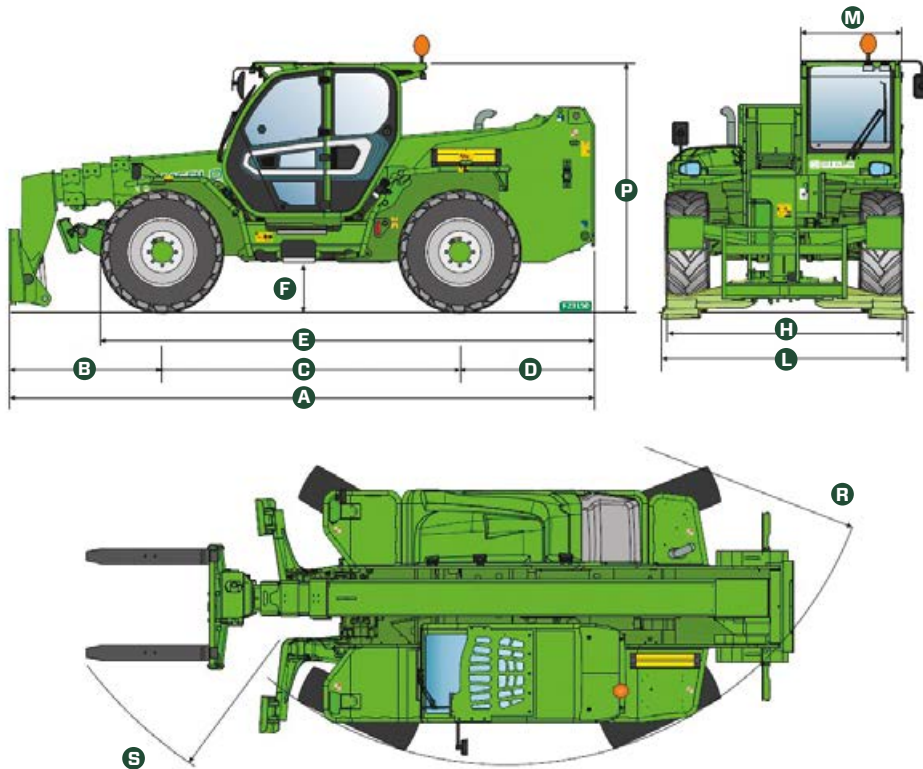


# Teleskopplader mit Abstützungen



# Technische Daten

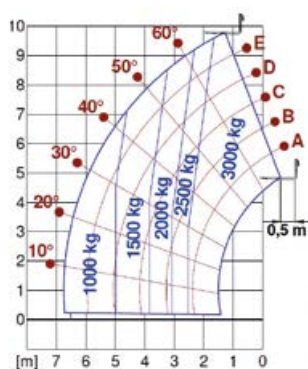


| MODELL               | ABMESSUNGEN | A    | B    | C    | D    | E    | F   | H    | L    | M    | P                | R    | S    |
|----------------------|-------------|------|------|------|------|------|-----|------|------|------|------------------|------|------|
| <b>P30.10</b>        | mm          | 4700 | 1360 | 2740 | 600  | 3910 | 290 | 2100 | -    | 1010 | 2120<br>(2020 L) | 3930 | 5050 |
| <b>P35.11</b>        | mm          | 5150 | 1634 | 2810 | 705  | 4104 | 460 | 2310 | -    | 1010 | 2530             | 3985 | 5200 |
| <b>TF35.11TT-145</b> | mm          | 5150 | 1634 | 2810 | 705  | 1404 | 460 | 2310 | -    | 1010 | 2530             | 3985 | 5200 |
| <b>P40.12</b>        | mm          | 5010 | 1290 | 2810 | 910  | 4260 | 375 | 2240 | 2380 | 1010 | 2425             | 3920 | 4900 |
| <b>P40.12PLUS</b>    | mm          | 5010 | 1290 | 2810 | 910  | 4260 | 375 | 2240 | 2380 | 1010 | 2425             | 3920 | 4900 |
| <b>P40.13</b>        | mm          | 5410 | 1690 | 2810 | 910  | 4260 | 375 | 2240 | 2380 | 1010 | 2425             | 3920 | 4940 |
| <b>P40.13PLUS</b>    | mm          | 5410 | 1690 | 2810 | 910  | 4260 | 375 | 2240 | 2380 | 1010 | 2425             | 3920 | 4940 |
| <b>P40.13CSTOP</b>   | mm          | 5410 | 1690 | 2810 | 910  | 4260 | 375 | 2240 | 2380 | 1010 | 2425             | 3920 | 4940 |
| <b>P40.14</b>        | mm          | 5750 | 1645 | 2810 | 1295 | 4640 | 375 | 2240 | 2380 | 1010 | 2425             | 3920 | 5040 |
| <b>P40.14PLUS</b>    | mm          | 5750 | 1645 | 2810 | 1295 | 4640 | 375 | 2240 | 2380 | 1010 | 2425             | 3920 | 5040 |
| <b>P40.14CSTOP</b>   | mm          | 5750 | 1645 | 2810 | 1295 | 4640 | 375 | 2240 | 2380 | 1010 | 2425             | 3920 | 5040 |
| <b>P40.17</b>        | mm          | 5970 | 1705 | 2950 | 1315 | 4852 | 450 | 2240 | 2550 | 1010 | 2500             | 4050 | 5160 |
| <b>P40.17PLUS</b>    | mm          | 5970 | 1705 | 2950 | 1315 | 4852 | 450 | 2240 | 2550 | 1010 | 2500             | 4050 | 5160 |
| <b>P40.17CSTOP</b>   | mm          | 5970 | 1705 | 2950 | 1315 | 4852 | 450 | 2240 | 2550 | 1010 | 2500             | 4050 | 5160 |
| <b>P50.18PLUS</b>    | mm          | 6190 | 1745 | 3060 | 1385 | 5067 | 485 | 2480 | 2550 | 1010 | 2535             | 4265 | 5611 |
| <b>P50.18CSTOP</b>   | mm          | 6190 | 1745 | 3060 | 1385 | 5067 | 485 | 2480 | 2550 | 1010 | 2535             | 4265 | 5611 |

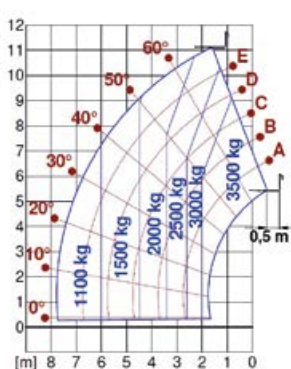
\*Kabinenfederung aktiviert

| MODELL                                     | P30.10               | P35.11               | TF35.11TT-145           | P40.12               | P40.12PLUS              | P40.13               | P40.13PLUS              |
|--|----------------------|----------------------|-------------------------|----------------------|-------------------------|----------------------|-------------------------|
| Gesamtleergewicht (kg)                     | 7600                 | 9000                 | 9100                    | 9200                 | 9200                    | 9300                 | 9300                    |
| Maximale Tragkraft (kg)                    | 3000                 | 3500                 | 3500                    | 4000                 | 4000                    | 4000                 | 4000                    |
| Hubhöhe (m)                                | 9,8                  | 11                   | 11                      | 11,5                 | 11,5                    | 12,5                 | 12,5                    |
| Maximale Ausladung (m)                     | 6,7                  | 7,8                  | 7,8                     | 7,63                 | 7,63                    | 8,74                 | 8,74                    |
| Ausladung bei maximaler Tragfähigkeit (m)  | 2,5                  | 2                    | 2                       | 3,4                  | 3,4                     | 3,3                  | 3,3                     |
| Tragfähigkeit bei maximaler Ausladung (kg) | 1000                 | 1000                 | 1000                    | 1300                 | 1300                    | 1000                 | 1000                    |
| Seitenverschub des Rahmens (mm)            | -                    | +/- 310              | +/- 310                 | +/- 330              | +/- 330                 | +/- 340              | +/- 340                 |
| Niveaueingleich (%)                        | -                    | +/- 8                | +/- 8                   | +/- 8                | +/- 8                   | +/- 8                | +/- 8                   |
| Motor                                      | Kohler 2504 TCR      | Kohler 2504 TCR      | Deutz TCD3.6            | Kohler KDI2504       | Perkins 904J            | Kohler KDI2504       | Perkins 904J            |
| Motorleistung (kW/PS)                      | 55,4/75,1            | 55,4/75,1            | 105/143                 | 55,4/75,1            | 85,9/115                | 55,4/75,1            | 85,9/115                |
| Abgasreinigungstechnologie                 | Stage V DOC + DPF    | Stage V DOC + DPF    | Stage V SCR + DPF + DOC | Stage V DOC + DPF    | Stage V SCR + DPF + DOC | Stage V DOC + DPF    | Stage V SCR + DPF + DOC |
| Höchstgeschwindigkeit (km/h)               | 20/35 (opt.)         | 20/35 (opt.)         | 20/40 (opt.)            | 20/35 (opt.)         | 20/40 (opt.)            | 20/35 (opt.)         | 20/40 (opt.)            |
| Kraftstofftank (l)                         | 80                   | 140                  | 140                     | 140                  | 140                     | 140                  | 140                     |
| AdBlue-Behälter (l)                        | -                    | -                    | 18                      | -                    | 18                      | -                    | 18                      |
| Hydrostatischer Antrieb                    | JA - 2-Gang          | JA - 2-Gang          | JA - 2-Gang             | JA - 2-Gang          | JA - 2-Gang             | JA - 2-Gang          | JA - 2-Gang             |
| EPD  | Plus                 | Plus                 | Plus                    | Plus                 | Plus                    | Plus                 | Plus                    |
| Hydraulikpumpe                             | LS+FS                | LS + FS              | LS + FS                 | LS                   | LS                      | LS                   | LS                      |
| Durchfluss/Druck (l/min - bar)             | 117-210              | 117 - 250            | 150-250                 | 104 - 250            | 104 - 250               | 104 - 250            | 104 - 250               |
| Hydraulikölbehälter (l)                    | 85                   | 100                  | 100                     | 100                  | 100                     | 100                  | 100                     |
| Kabineausstattung                          | ECO                  | ECO                  | ECO                     | ECO                  | ECO                     | ECO                  | ECO                     |
| ASCS                                       | Light                | Light                | Light                   | Light                | Full                    | Light                | Full                    |
| Kabine FOPS II, ROPS                       | JA                   | JA                   | JA                      | JA                   | JA                      | JA                   | JA                      |
| Bedienelemente in Kabine                   | Kapazitiver Joystick | Kapazitiver Joystick | Kapazitiver Joystick    | Kapazitiver Joystick | Kapazitiver Joystick    | Kapazitiver Joystick | Kapazitiver Joystick    |
| Fahrtrichtungsschalter                     | Dual Reverse         | Dual Reverse         | Dual Reverse            | Dual Reverse         | Dual Reverse            | Dual Reverse         | Dual Reverse            |
| Schwingungsdämpfung am Hubzylinder BSS     | OPT                  | OPT                  | OPT                     | OPT                  | OPT                     | OPT                  | OPT                     |
| Tac-Lock                                   | JA                   | JA                   | JA                      | JA                   | JA                      | JA                   | JA                      |
| Allradantrieb                              | JA                   | JA                   | JA                      | JA                   | JA                      | JA                   | JA                      |
| Allradlenkung                              | JA                   | JA                   | JA                      | JA                   | JA                      | JA                   | JA                      |

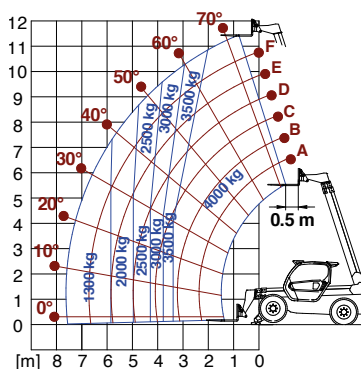
**P30.10**



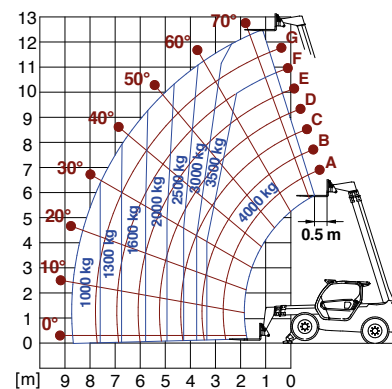
**P35.11**



**P40.12**

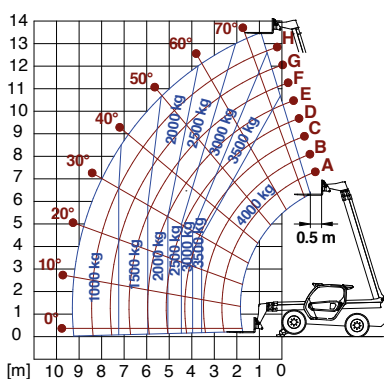


**P40.13**

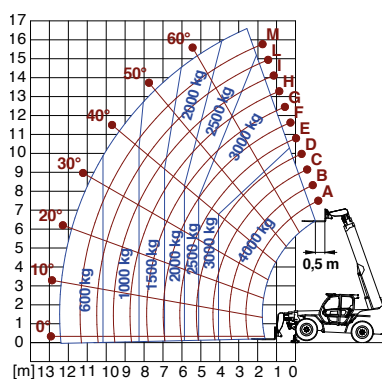


| P40.13CSTOP             | P40.14               | P40.14PLUS              | P40.14CSTOP             | P40.17               | P40.17PLUS              | P40.17CSTOP             | P50.18PLUS              | P50.18CSTOP             |
|-------------------------|----------------------|-------------------------|-------------------------|----------------------|-------------------------|-------------------------|-------------------------|-------------------------|
| 9650                    | 9950                 | 9950                    | 10300                   | 11670                | 11670                   | 12020                   | 13300                   | 13650                   |
| 4000                    | 4000                 | 4000                    | 4000                    | 4000                 | 4000                    | 4000                    | 5000                    | 5000                    |
| 12,5                    | 13,5                 | 13,5                    | 13,5                    | 16,6                 | 16,6                    | 16,6                    | 17,5                    | 17,5                    |
| 8,74                    | 9,3                  | 9,3                     | 9,3                     | 12,47                | 12,47                   | 12,47                   | 13,5                    | 13,5                    |
| 3,3                     | 3,56                 | 3,56                    | 3,56                    | 4,06                 | 4,06                    | 4,06                    | 3,7                     | 3,7                     |
| 1000                    | 1000                 | 1000                    | 1000                    | 600                  | 600                     | 600                     | 750                     | 750                     |
| +/- 340                 | +/- 345              | +/- 345                 | +/- 345                 | +/- 435              | +/- 435                 | +/- 435                 | +/- 445                 | +/- 445                 |
| +/- 8                   | +/- 8                | +/- 8                   | +/- 8                   | +/- 8                | +/- 8                   | +/- 8                   | +/- 8                   | +/- 8                   |
| Perkins 904J            | Kohler KDI2504       | Perkins 904J            | Perkins 904J            | Kohler KDI2504       | Perkins 904J            | Perkins 904J            | Perkins 904J            | Perkins 904J            |
| 100/136                 | 55,4/75,1            | 85,9/115                | 100/136                 | 55,4/75,1            | 85,9/115                | 100/136                 | 85,9/115                | 100/136                 |
| Stage V SCR + DPF + DOC | Stage V DOC + DPF    | Stage V SCR + DPF + DOC | Stage V SCR + DPF + DOC | Stage V DOC + DPF    | Stage V SCR + DPF + DOC | Stage V SCR + DPF + DOC | Stage V SCR + DPF + DOC | Stage V SCR + DPF + DOC |
| 20/40 (opt.)            | 20/35 (opt.)         | 20/40 (opt.)            | 20/40 (opt.)            | 20/35 (opt.)         | 20/40 (opt.)            | 20/40 (opt.)            | 20/40 (opt.)            | 20/40 (opt.)            |
| 140                     | 140                  | 140                     | 140                     | 140                  | 140                     | 140                     | 140                     | 140                     |
| 18                      | -                    | 18                      | 18                      | -                    | 18                      | 18                      | 18                      | 18                      |
| JA - 2-Gang             | JA - 2-Gang          | JA - 2-Gang             | JA - 2-Gang             | JA - 2-Gang          | JA - 2-Gang             | JA - 2-Gang             | JA - 2-Gang             | JA - 2-Gang             |
| Plus                    | Plus                 | Plus                    | Plus                    | Plus                 | Plus                    | Plus                    | Plus                    | Plus                    |
| LS + FS                 | LS                   | LS                      | LS + FS                 | LS                   | LS                      | LS + FS                 | LS                      | LS + FS                 |
| 145 - 250               | 104 - 250            | 104 - 250               | 145 - 250               | 104 - 250            | 104 - 250               | 145 - 250               | 104 - 250               | 145 - 250               |
| 100                     | 100                  | 100                     | 100                     | 100                  | 100                     | 100                     | 110                     | 110                     |
| ECO                     | ECO                  | ECO                     | ECO                     | ECO                  | ECO                     | ECO                     | ECO                     | ECO                     |
| Full                    | Light                | Full                    | Full                    | Light                | Full                    | Full                    | Full                    | Full                    |
| JA                      | JA                   | JA                      | JA                      | JA                   | JA                      | JA                      | JA                      | JA                      |
| Kapazitiver Joystick    | Kapazitiver Joystick | Kapazitiver Joystick    | Kapazitiver Joystick    | Kapazitiver Joystick | Kapazitiver Joystick    | Kapazitiver Joystick    | Kapazitiver Joystick    | Kapazitiver Joystick    |
| Dual Reverse            | Dual Reverse         | Dual Reverse            | Dual Reverse            | Dual Reverse         | Dual Reverse            | Dual Reverse            | Dual Reverse            | Dual Reverse            |
| OPT                     | OPT                  | OPT                     | OPT                     | OPT                  | OPT                     | OPT                     | OPT                     | OPT                     |
| JA                      | JA                   | JA                      | JA                      | JA                   | JA                      | JA                      | JA                      | JA                      |
| JA                      | JA                   | JA                      | JA                      | JA                   | JA                      | JA                      | JA                      | JA                      |
| JA                      | JA                   | JA                      | JA                      | JA                   | JA                      | JA                      | JA                      | JA                      |

**P40.14**



**P40.17**



**P50.18**

