

# ZOOMLION

## VERTICAL MAST LIFTS

### ZMP04/ZMP06

#### HIGHLIGHTS

- ▶ Permanent magnet synchronous traveling motor, energy saving and high efficiency
- ▶ Standard large-diameter tires and collectable pothole plates, easy to pass the threshold
- ▶ Front wheel driving and steering and small turning radius for flexible indoor movement
- ▶ Multi-arm synchronous lifting, fast and no impact
- ▶ Compact dimensions, access to lifts, and ideal for indoor applications

#### FEATURES

##### Standard Features

Autobrake system	Emergency stop button
Proportional control	Flashing beacon
All motion alarm	Active pothole protection system
Charging protection system	Horn
Self-closing entry gate	On-board diagnostic
Maintenance-free battery	Hour meter
Unidirectional extension platform	Load sensing system
Drivable at full height	Over tilt protective system
Emergency descent system	Forklift pockets

##### Accessories & Options

- ▶ Platform work light
- ▶ AC power to platform
- ▶ GPS

## ACCESS WITH ZOOMLION GREEN

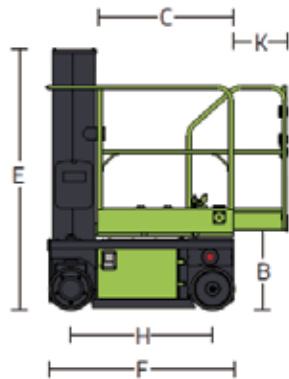
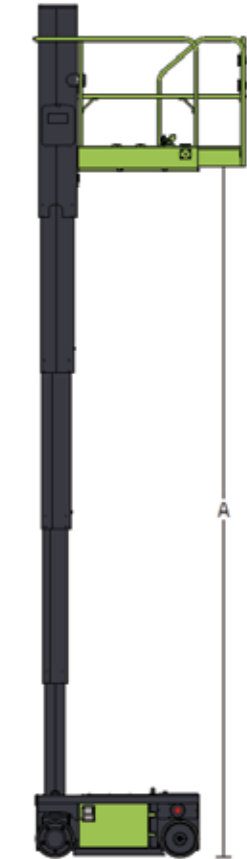
Phone: 0086(731)-88353692  
E-mail: awp@zoomlion.com

Add: 701 Xulong Nan Lu, Xiangjiang New District, Changsha Hunan, China  
Web: www.zoomlion-access.com



### ZOOMLION

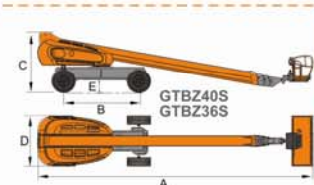
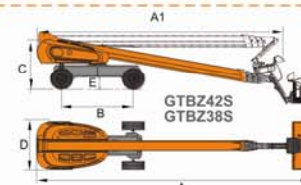
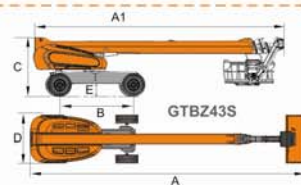
Model	ZMP04	ZMP06
Size		
Work height	5.82m	7.91m
A - Platform Height-Elevated	3.82m	5.91m
B - Platform Height-Stowed	0.6m	0.6m
C - Platform Length	1.02m	1.02m
D - Platform Width	0.76m	0.76m
K-Platform Extension	0.5m	0.5m
E - Overall Height	1.72m	1.99m
F - Overall Length	1.39m	1.39m
G - Overall Width	0.78m	0.78m
H - Wheelbase	1.06m	1.06m
I - Ground Clearance (Stowed)	0.065m	0.065m
J - Ground Clearance (Raised)	0.017m	0.017m
Performance		
Platform Capacity	230kg	200kg
Capacity on Deck Extension	113kg	113kg
Max. Number of Workers (indoor/outdoor)	2/1	1/0
Drive Speed (Stowed)	4km/h	4km/h
Drive Speed (Raised)	0.5km/h	0.5km/h
Turning Radius (Inside)	0.14m	0.14m
Turning Radius (Outside)	1.43m	1.43m
Lifting Motor	24V/2.5KW	24V/2.5KW
Drive Motor	24V/2×0.6KW	24V/2×0.6KW
Up/Down Time	16/18s	25/30s
Gradeability	25% (14°)	25% (14°)
Max. Working Slope (Lateral/Vertical)	1.5°/3°	1.5°/3°
Control	Proportional control	Proportional control
Drive	Front wheels	Front wheels
Brake	Front wheels	Front wheels
Tire	Solid seamless tire	Solid seamless tire
Power		
Battery	2×12V/120Ah	2×12V/120Ah
Charger	24V/20A	24V/20A
Weight		
Gross	900kg	1085kg



ZOOMLION ACCESS reserves the right to make specification and/or equipment changes without prior notification. Product specifications are updated to June, 2024.

# GTBZ (ULTRA BOOM)

## Self-Propelled Telescopic Boom Lifts



	GTBZ43S	GTBZ42S	GTBZ40S	GTBZ38S	GTBZ36S
S.W.L					
Unrestricted	230kg	230kg	340kg	230kg	340kg
Restricted	450kg	450kg	450kg	450kg	450kg
Max.occupants	2	2	2	2	2



Max. Working Height(Unrestricted)	43m	42m	40m	38m	36m
Max. Working Height(Restricted)	40m	39m	37m	35m	33m
Max. Platform Height(Unrestricted)	41m	40m	38m	36m	34m
Max. Platform Height(Restricted)	38m	37m	35m	33m	31m



Max. Horizontal Reach(Unrestricted)	24m	24m	23m	24m	23m
Max. Horizontal Reach(Restricted)	21m	21m	20m	21m	20m
Turntable tailswing(Axle Retracted)	1.95m	1.95m	1.95m	1.95m	1.95m
Turntable tailswing(Axle Extended)	1.3m	1.3m	1.3m	1.3m	1.3m
Under Ground Reach	3m	3m	1.1m	3m	1.1m
Overall Length(Stowed)	15.88m	15.24m	14.04m	14.04m	12.85m
Overall Length(Transport)	13.12m	12.92m	/	11.74m	/
Overall Width(Axle Retracted)	2.5m	2.5m	2.5m	2.5m	2.5m
Overall Width(Axle Extended)	3.8m	3.8m	3.8m	3.8m	3.8m
Overall Height	3.07m	3.07m	3.07m	3.07m	3.07m
Platform Size	2.4X0.9m	2.4X0.9m	2.4X0.9m	2.4X0.9m	2.4X0.9m
Ground Clearance	0.32m	0.32m	0.32m	0.32m	0.32m
Wheel Base	3.8m	3.8m	3.8m	3.8m	3.8m
Turning Radius					
Inside/Outside (Axle Retracted)	4.18/5.15m	4.18/5.15m	4.18/5.15m	4.18/5.15m	4.18/5.15m
Inside/Outside (Axle extended)	2.37/3.78m	2.37/3.78m	2.37/3.78m	2.37/3.78m	2.37/3.78m



Turret Rotation	360° continuous	360° continuous	360° continuous	360° continuous	360° continuous
Platform Rotation	+/-90°	+/-90°	+/-90°	+/-90°	+/-90°
Jib Movement	+70° /-60°	+70° /-60°	/	+70° /-60°	/



Engine					
Perkins 804-33T	62kw/2600rpm	62kw/2600rpm	62kw/2600rpm	62kw/2600rpm	62kw/2600rpm
Fuel	Fuel	Fuel	Fuel	Fuel	Fuel



Travel Speed(Stowed)	5.1km/h	5.1km/h	5.1km/h	5.1km/h	5.1km/h
Travel Speed(Working)	≤1.1km/h	≤1.1km/h	≤1.1km/h	≤1.1	≤1.1



Gradeability	40%	40%	40%	40%	40%
Maximum slope	5°	5°	5°	5°	5°



Hydraulic tank	280L	280L	280L	280L	280L
Fuel Tank	150L	150L	150L	150L	150L

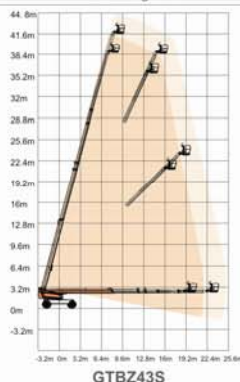


Tyre	445/65-22.5	445/65-22.5	445/65-22.5	445/65-22.5	445/65-22.5
------	-------------	-------------	-------------	-------------	-------------

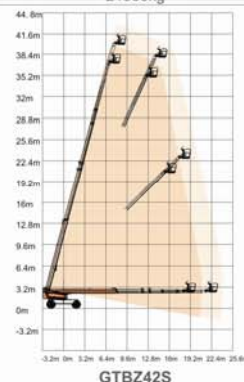


Gross Weight	21800kg	21500kg	21250kg	21000kg	20250kg
--------------	---------	---------	---------	---------	---------

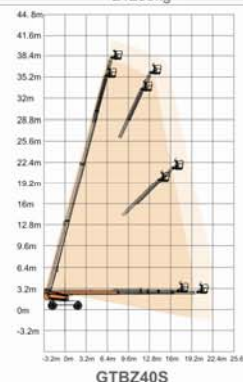
Restricted  
Unrestricted



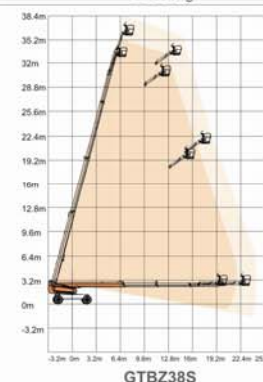
GTBZ43S



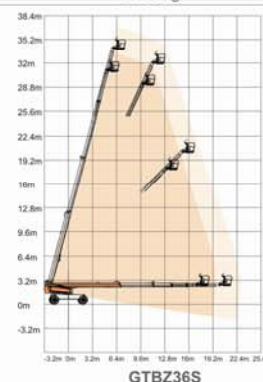
GTBZ42S



GTBZ40S



GTBZ38S



GTBZ36S

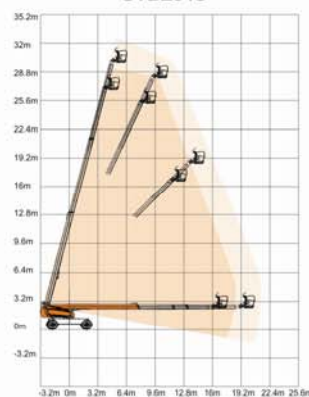
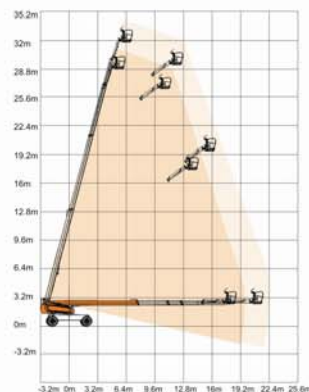


# GTBZ-S

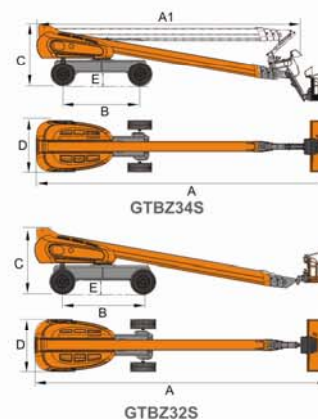
## Self-Propelled Telescopic Boom Lifts

### GTBZ34S / GTBZ32S

	GTBZ34S	GTBZ32S
 <b>S.W.L</b>		
Unrestricted	230kg	340kg
Restricted	450kg	450kg
Max.occupants	2	2
 <b>Max. Working Height(Unrestricted)</b>	34m	32m
<b>Max. Working Height(Restricted)</b>	31m	29m
<b>Max. Platform Height(Unrestricted)</b>	32m	30m
<b>Max. Platform Height(Restricted)</b>	29m	27m
 <b>Max. Horizontal Reach(Unrestricted)</b>	22m	22m
<b>Max. Horizontal Reach(Restricted)</b>	19m	19m
<b>Turntable tailswing(Axle Retracted)</b>	1.95m	1.95m
<b>Turntable tailswing(Axle Extended)</b>	1.3m	1.3m
<b>Under Ground Reach</b>	3m	1.1m
 <b>Overall Length(Stowed)</b>	14.53m	13.34m
 <b>Overall Length(Transport)</b>	12.23m	/
 <b>Overall Width(Axle Retracted)</b>	2.5m	2.5m
 <b>Overall Width(Axle Extended)</b>	3.8m	3.8m
 <b>Overall Height</b>	3.05m	3.05m
<b>Platform Size</b>	2.4X0.9m	2.4X0.9m
 <b>Ground Clearance</b>	0.32m	0.32m
 <b>Wheel Base</b>	3.8m	3.8m
<b>Turning Radius</b>		
Inside/Outside (Axle Retracted)	4.18/5.15m	4.18/5.15m
Inside/Outside (Axle extended)	2.37/3.78m	2.37/3.78m
 <b>Turret Rotation</b>	360° continuous	360° continuous
<b>Platform Rotation</b>	+/-90°	+/-90°
<b>Jib Movement</b>	+70° /-60°	/
 <b>Engine</b>		
Perkins 804-33T	62kw/2600rpm	62kw/2600rpm
<b>Fuel</b>	Fuel	Fuel
 <b>Travel Speed(Stowed)</b>	5.1km/h	5.1km/h
<b>Travel Speed(Working)</b>	≤1.1km/h	≤1.1km/h
 <b>Gradeability</b>	40%	40%
<b>Maximum slope</b>	5°	5°
 <b>Hydraulic tank</b>	280L	280L
<b>Fuel Tank</b>	150L	150L
 <b>Tyre</b>	445/65-22.5	445/65-22.5
 <b>Gross Weight</b>	18250kg	18000kg



Restricted  
Unrestricted



### Standard equipment

- Can Bus Technology
- Proportional controls
- Safety electric pump
- Horn
- Hour meter
- Overload sensor with alarm
- Tilt sensor
- 360° continuous turntable rotation
- Self-leveling platform
- Onboard diagnostic system
- Hydraulic platform rotation
- Anti-restart engine protection
- The glow plugs for cold starting
- Extendable axles
- Oscillating axle

### Options

- Hydraulic generator
- Hydraulic welder
- Hydraulic compressor
- Hydraulic water pump
- AC power to platform
- Platform work lights



Flashing beacon



Ground control



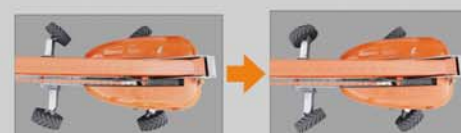
Transport lock pin



Waterproof platform control



Platform work lights



4WS



Extendable axles

# GTBZ-SI

## Self-Propelled Telescopic Boom Lifts



GTBZ28SI



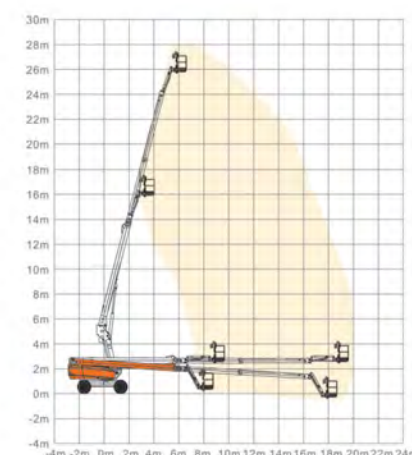
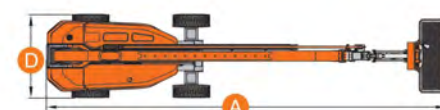
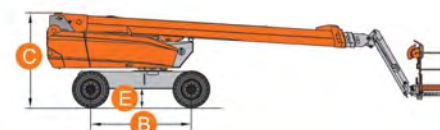
S.W.L	230kg
Max.Occupants	2



Max.Working Height	27.90m
Max.Platform Height	25.90m



Max.Horizontal Reach	20.00m
Turntable Tailswing	1.90m
A Overall Length(Stowed)	11.94m
D Overall Width	2.50m
Overall Width(Transport)	2.28m
C Overall Height	2.83m
Overall Height(Transport)	2.55m
Platform Size(Length/Width)	2.20m×0.80m
E Ground Clearance	0.36m
B Wheelbase	3.00m
Turning Radius(Inside/Outside)	3.93m/5.81m



Turret Rotation	360°continuous
Platform Rotation	±90°
Jib Movement	+70°/-60°



Engine	
Deutz D2011 L03	36.4kW/2800rpm
Deutz TD 2.9 L4 - Option	55.4kW/2600rpm
Fuel	Diesel



Travel Speed(Stowed)	6.1km/h
Travel Speed(Raised)	≤1.1km/h



Gradeability	40%
Max.Working Slope	4°



Hydraulic Tank	230L
Diesel Tank	110L



Tyres	385/65-22.5
-------	-------------



Weight	15100kg
--------	---------

### Standard Equipment

- Can Bus Technology
- Proportional Controls
- Safety Electric Pump
- Horn
- Hour Meter
- Overload Sensor With Alarm
- Tilt Sensor
- 360° Continuous Turntable Rotation
- Self-leveling Platform
- Onboard Diagnostic System
- Hydraulic Platform Rotation
- Anti-restart Engine Protection
- The Glow Plugs For Cold Starting
- Oscillating Axle
- 4WD
- European III Emission Engine
- Deadman
- Hydraulic Oil Cooler
- Rough Terrain Foam-filled Tyres

### Options

- Hydraulic Generator
- Hydraulic Compressor
- Hydraulic Water Pump
- AC Power To Platform
- Hydraulic Welder
- Platform Work Lights
- European IV Emission Engine



Ground Control



Transport Lock Pin



Waterproof Platform Control



Foot Deadman



Safety Electric Pump



Oscillating Axle



Swing Out Engine Tray



Gradeability

# GTBZ-S

## Self-Propelled Telescopic Boom Lifts



GTBZ24S



S.W.L	230kg
Max.Occupants	2

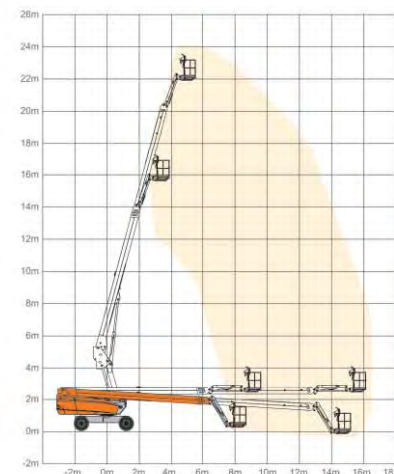
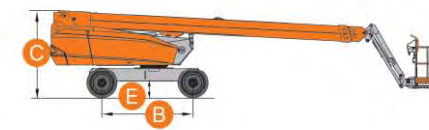
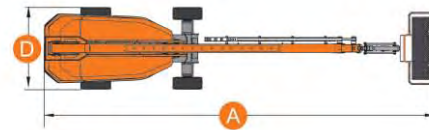


Max.Working Height	24.22m
Max.Platform Height	22.22m



Max.Horizontal Reach	16.36m
Turntable Tailswing	1.90m

A Overall Length	11.97m
D Overall Width	2.49m
Overall Width(Transport)	2.20m
C Overall Height	2.68m
Overall Height(Transport)	2.50m
Platform Size(Length/Width)	2.20m×0.80m
E Ground Clearance	0.28m
B Wheelbase	2.80m
Turning Radius(Inside/Outside)	3.52m/5.64m



Turret Rotation	360°continuous
Platform Rotation	±90°
Jib Movement	+70°/-60°



Engine	
Kubota V2403	34.1kW/2400rpm
Deutz D2011 L03 - Option	36.4kW/2800rpm
Fuel	Diesel



Travel Speed(Stowed)	6.1km/h
Travel Speed(Raised)	≤1.1km/h



Gradeability	40%
Max.Working Slope	5°



Hydraulic Tank	214L
Diesel Tank	155L



Tyres	355/55D625
-------	------------



Weight	11040kg
--------	---------

### Standard Equipment

- Can Bus Technology
- Proportional Controls
- Safety Electric Pump
- Horn
- Hour Meter
- Overload Sensor With Alarm
- Tilt Sensor
- 360° Continuous Turntable Rotation
- Self-leveling Platform
- Onboard Diagnostic System
- Hydraulic Platform Rotation
- Anti-restart Engine Protection
- The Glow Plugs For Cold Starting
- Oscillating Axle
- 4WD
- European III Emission Engine
- Deadman
- Hydraulic Oil Cooler
- Rough Terrain Foam-filled Tyres

### Options

- Hydraulic Generator
- Hydraulic Compressor
- Hydraulic Water Pump
- AC Power To Platform
- Hydraulic Welder
- Platform Work Lights
- European IV Emission Engine



Ground Control



Swing Out Engine Tray



Waterproof Platform Control



Foot Deadman



# GTBZ-SI

## Self-Propelled Telescopic Boom Lifts



GTBZ20SI



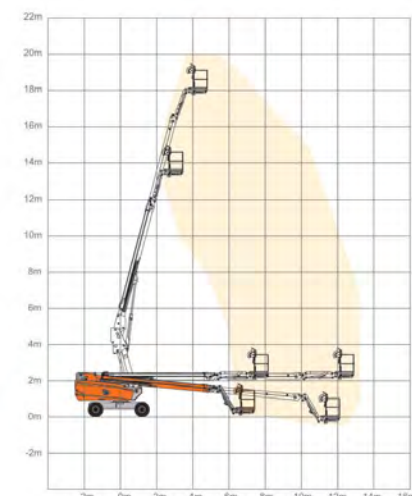
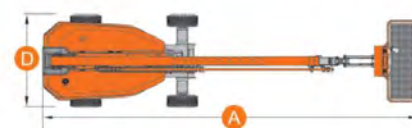
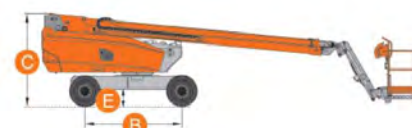
S.W.L	230kg
Max.Occupants	2



Max.Working Height	20.19m
Max.Platform Height	18.19m



Max.Horizontal Reach	13.50m
Turntable Tailswing	1.30m
A Overall Length(Stowed)	10.10m
D Overall Width	2.50m
Overall Width(Transport)	2.28m
C Overall Height	2.49m
Overall Height(Transport)	2.35m
Platform Size(Length/Width)	2.2m×0.8m
E Ground Clearance	0.24m
B Wheelbase	2.60m
Turning Radius(Inside/Outside)	3.37m/5.37m



Turret Rotation	360°continuous
Platform Rotation	±90°
Jib Movement	+70°/-60°



Engine	
Kubota V2403	34.1kW/2400rpm
Deutz D2011 L03 - Option	36.4kW/2800rpm
Fuel	Diesel



Travel Speed(Stowed)	6.1km/h
Travel Speed(Raised)	≤1.1km/h



Gradeability	40%
Max.Working Slope	5°



Hydraulic Tank	190L
Diesel Tank	110L



Tyres	315/55D20
-------	-----------



Weight	8800kg
--------	--------



Foot Deadman



Transport Lock Pin



Waterproof Platform Control



Beacon



### Standard Equipment

- Can Bus Technology
- Proportional Controls
- Safety Electric Pump
- Horn
- Hour Meter
- Tilt Sensor
- Rough Terrain Foam-filled Tyres
- Self-leveling Platform
- Onboard Diagnostic System
- Hydraulic Platform Rotation
- Anti-restart Engine Protection
- The Glow Plugs For Cold Starting
- Oscillating Axle
- European III Emission Engine
- 360° Continuous Turntable Rotation
- Deadman
- Hydraulic Oil Cooler
- 4WD

### Options

- Hydraulic Generator
- Hydraulic Compressor
- Hydraulic Water Pump
- AC Power To Platform
- Hydraulic Welder
- Platform Work Lights
- Overload Sensor With Alarm
- Non-marking Tyres

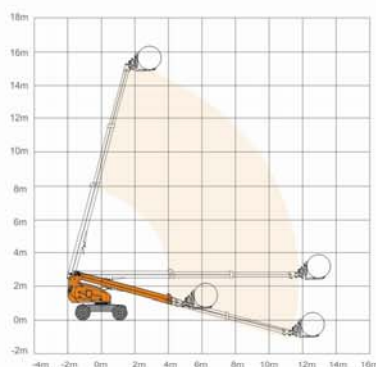
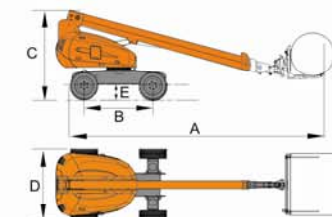


# GTBZ 16SD

## Self-Propelled Telescopic Duct Lifts

### GTBZ16SD

	S. W. L	230kg
	Max. Lifting Height	16.5m
	Max. Horizontal Reach	11.6m
	Turntable tailswing	0.86m
	Under Ground Reach	0.5m
	Overall Length	8.61m
	Overall Width	2.28m
	Overall Height	2.55m
	Ground Clearance	0.36m
	Wheel Base	2.2m
	Turning Radius(Inside/Outside)	2.85/4.29m
	Turret Rotation	360° continuous
	Fork vertical Rotation	360° continuous
	Fork Horizontal Rotation	+/-90°
	Engine	
	Perkins 404D-22	38kw/3000rpm
	Kubota V2403	34kw/2400rpm
	Fuel	Fuel
	Travel speed (Stowed)	6.1km/h
	Travel speed (Working)	≤1.1km/h
	Gradeability	40%
	Maximum slope	5°
	Hudraulic Tank	170L
	Fuel Tank	75L
	Tyre	33"12-20
	Gross Weight	7800kg



Multifunction



Transport lock pin



Working lights



Remote controller



Lift crane hook

### Standard equipment

- Can Bus Technology
- Proportional controls
- Safety electric pump
- Horn
- Hour meter
- Tilt sensor
- 360° continuous turntable rotation
- Self-leveling fork
- Anti-restart engine protection
- The glow plugs for cold starting
- 4WD
- Lift crane hook
- European III emission engine
- Hydraulic oil cooler
- Solid tyres



# GTBZ-SU

## Self-Propelled Telescopic Boom Lifts(Ultra Deck)



### GTBZ20SU



S.W.L	1350kg
Goods	900kg
Max.Occupants	4



Max.Working Height	20.3m
Max.Platform Height	18.3m



Max. Front Outreach(Outriggers extension)	12.1m
Max. Rear Outreach(Outriggers extension)	4.09m
Max. Platform Slide	2.19m
A Overall Length	7.68m
D Overall Width	2.46m
Overall Width (transported)	2.3m
C Overall Height(Rails Up)	3.8m
Overall Height(Rails Down)	2.89m
Overall Height(transported)	2.59m
Platform Size(Length B /Width E)	6.70m x 2.28m
Ground Clearance	0.37m
Wheelbase	4.00m
Turning Radius(Inside/Outside)	2.62/4.41m



Turret Rotation	±90°
-----------------	------



Engine	
DEUTZ D2011 L03	36.4kW/2800rpm
DEUTZ TD2.9 L4 - Option	55.4kW/2600rpm
Fuel	Diesel



Travel Speed(Stowed)	6km/h
Travel Speed(Raised)	0.9km/h



Gradeability	40%
Max.Working Slope	3°/5°
Chassis Leveling	10°



Hydraulic Tank	216L
Diesel Tank	137L



Tyres	385/65-22.5
-------	-------------



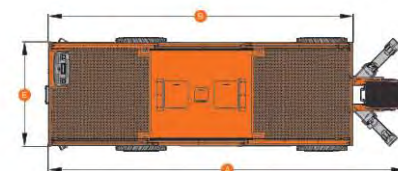
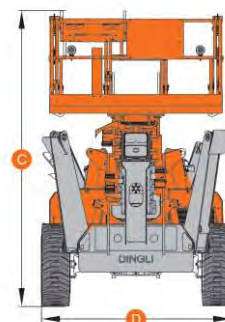
Weight	18000kg
--------	---------



Platform Slide Movement



180° Platform Rotation



Automatic Outriggers



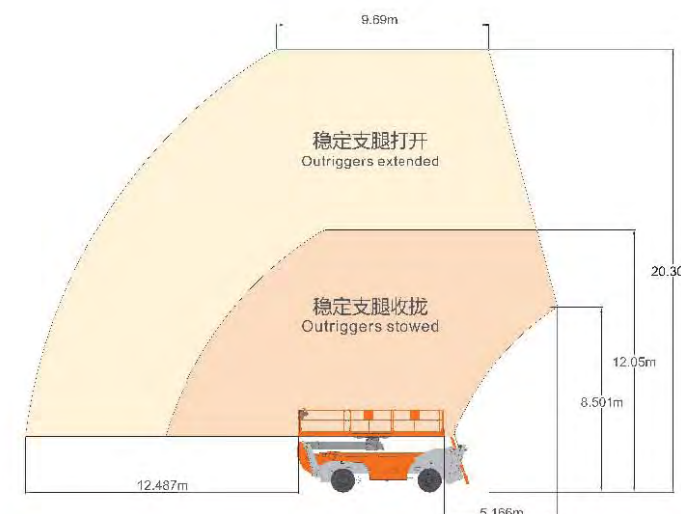
Gradeability



Weighing sensor



Chassis Auto-leveling



### Standard Equipment

- Can Bus Technology
- Proportional Controls
- Safety Electric Pump
- Overload Sensor With Alarm
- Tilt Sensor
- 180° Platform Rotation
- Self-leveling Platform
- Onboard Diagnostic System
- Slide Platform
- Anti-restart Engine Protection
- The Glow Plugs For Cold Starting
- Chassis Auto-leveling
- Oscillating Axle
- European III Emission Engine
- Automatic Outriggers
- Hydraulic Oil Cooler
- Rough Terrain Foam-filled Tyres

- 4WD
- 4WS
- Horn
- Hour Meter

### Options

- Hydraulic Generator
- Hydraulic Compressor
- Hydraulic Water Pump
- AC Power To Platform
- Hydraulic Welder
- Platform Work Lights
- European IV Emission Engine