

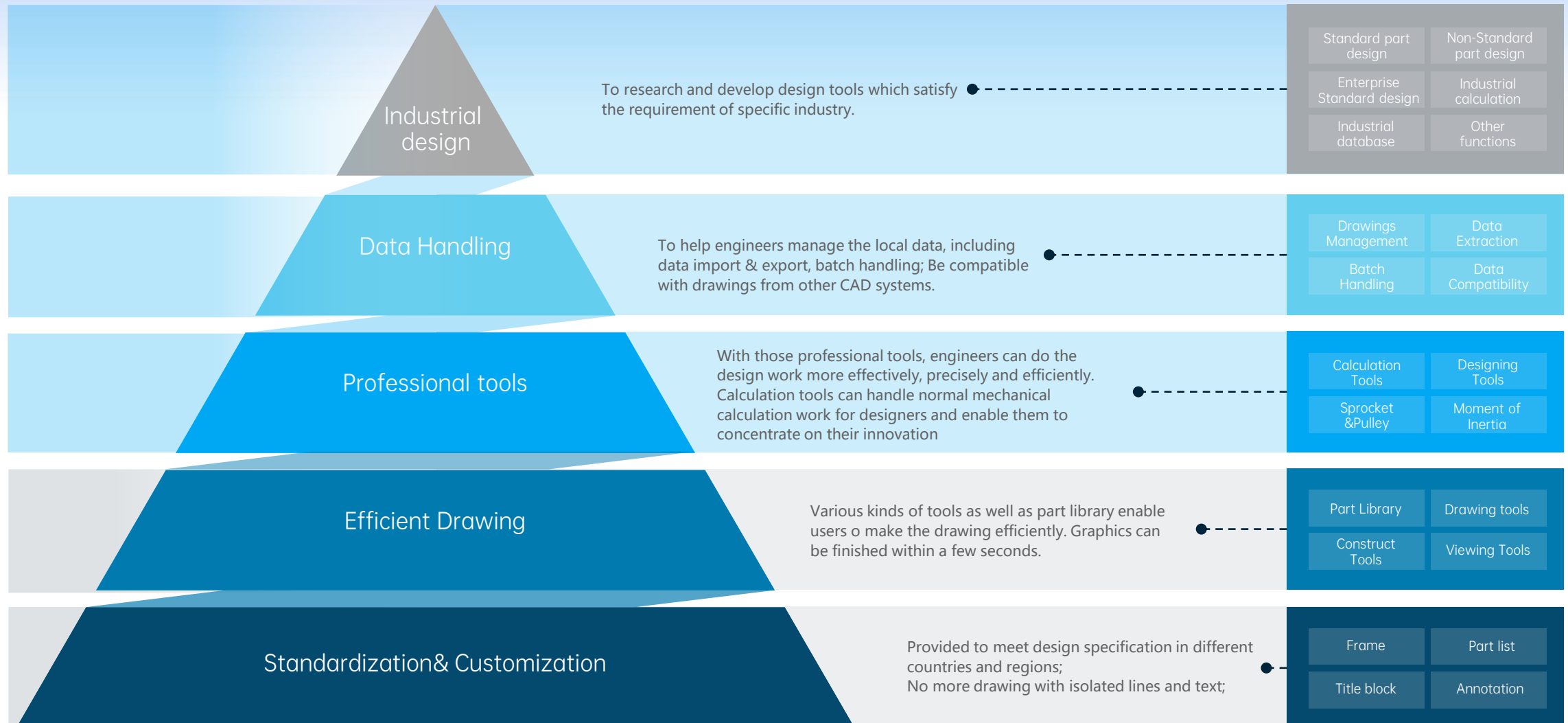
ZWSOFT

ZWCAD Mechanical 2026 Introduction



Product Outline

Value of the Product



Release Background

- **Design Efficiency**

How to help engineers improve their design efficiency?

- **Compatibility Improvement**

How to help users reuse their historical drawings?

- **Data Management**

How to manage designing data on local computer?



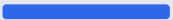
ZWCADM 2026



Product Feature



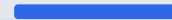
**Design
Efficiency**



Compatibility



**Data
Management**



Design Efficiency

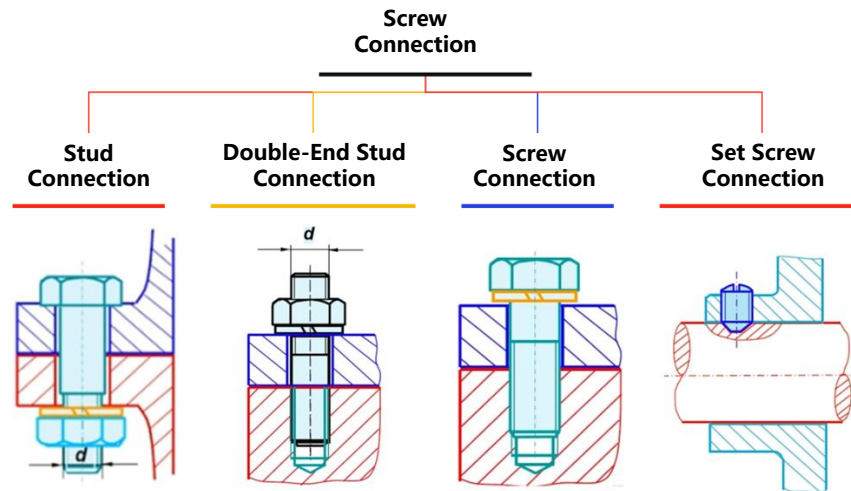
Be Competitive

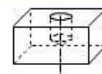
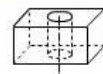
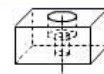
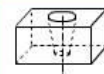
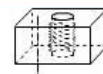
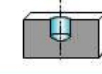
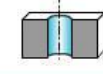
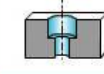
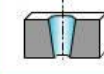
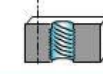
Design Efficiency

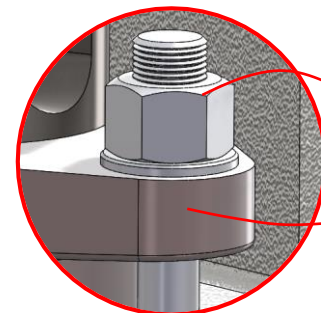
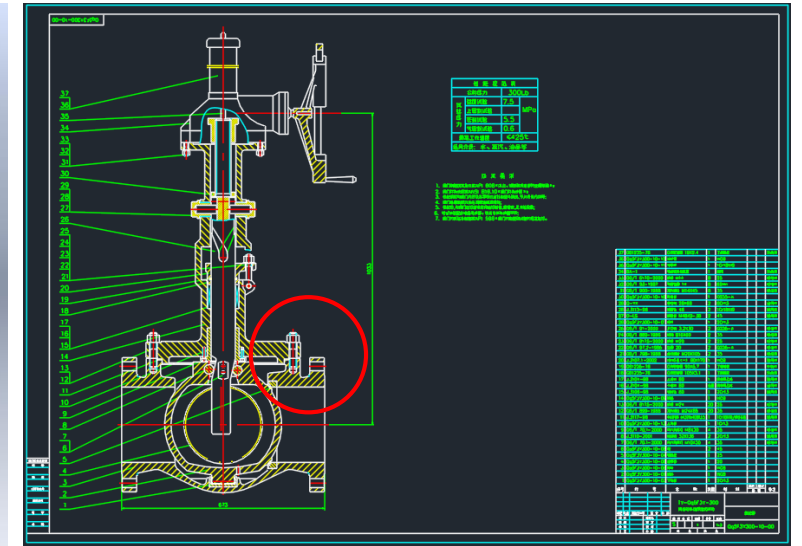
Screw Connection

Background

Designing toolset in ZWCAD MFG 2026 provides a wizard called screw connection to create entire fastener assemblies to connect two mechanical parts. screw, nuts and washers can be selected in this wizard and do not have to be exported from the library one after another, which consequently improves the designing efficiency.

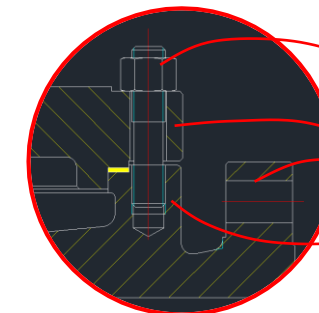


	Blind-Hole	Through-Hole	Stepped-Hole	Tapered-Hole	Threaded-Hole
Form					
Section-Form					



Screw Connection

Through-Hole



Double-end Stud

Through-Hole

Blind-Hole

Design Efficiency

Hole Design

Background

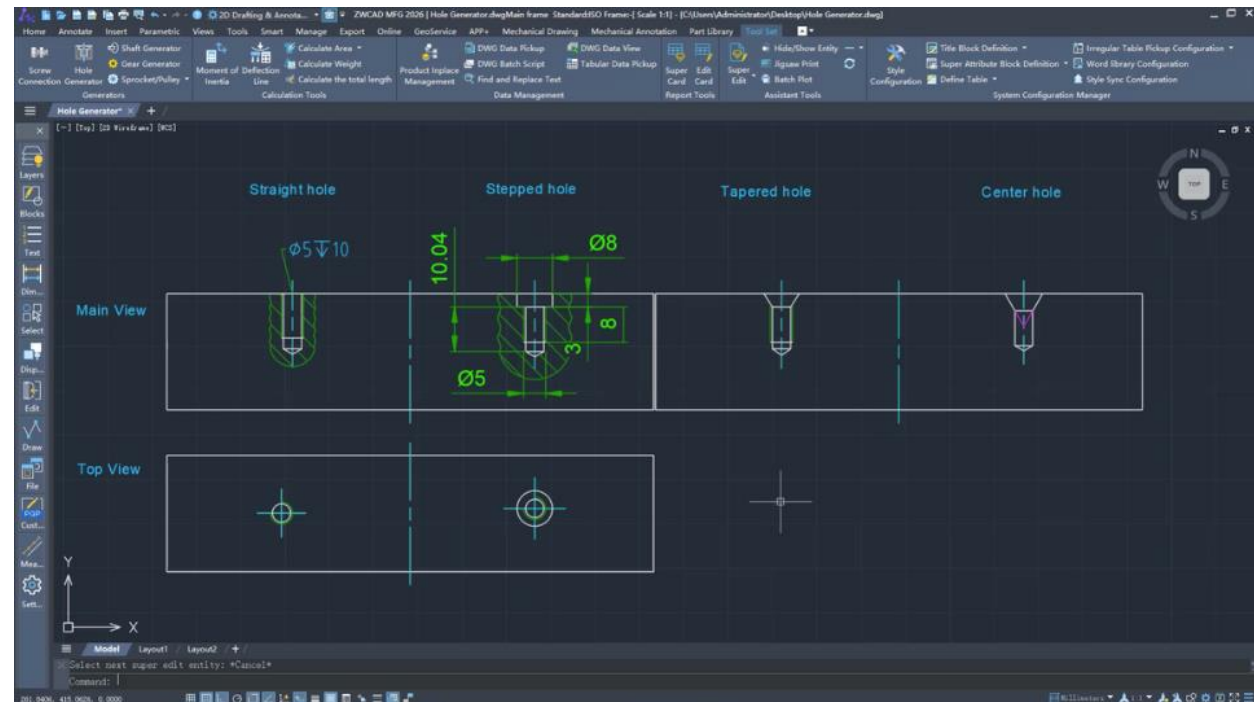
Hole Design tool enables users to select various types of holes and insert the view in the drawings. Hole type, length and view direction need to be given as parameters in the user interface.

Highlights

- Diversified hole type
- Commonly used screw standard integrated
- Section view supported
- Multiple intelligent dimension style

Customer

- Hangcha Corporation
- Taizhou Kangqian Mechanical Manufacturing Co.,Ltd
- Suzhou Asia-Pacific intelligent transmission technology Co., Ltd
- Yuyao Huatai Rubber machinery Co., Ltd
- Zhejiang Shangfeng Group Co. Ltd
- Huangshan Futian Precision Machinery Co., Ltd
- Tianjin Xiangwei Transmissions Co., Ltd



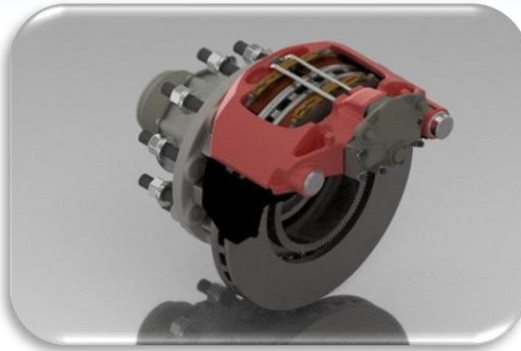
Design Efficiency

Market Demand



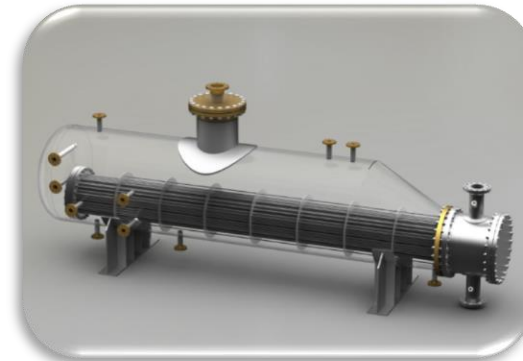
**Rail-Transit
Equipment**

Valve



Auto Parts

**Chemical
Equipment**



Machine Tools

Compatibility

Reuse the historical drawing

Enhanced Compatibility

Compatible with AutoCAD Mechanical 2004-2024

Background

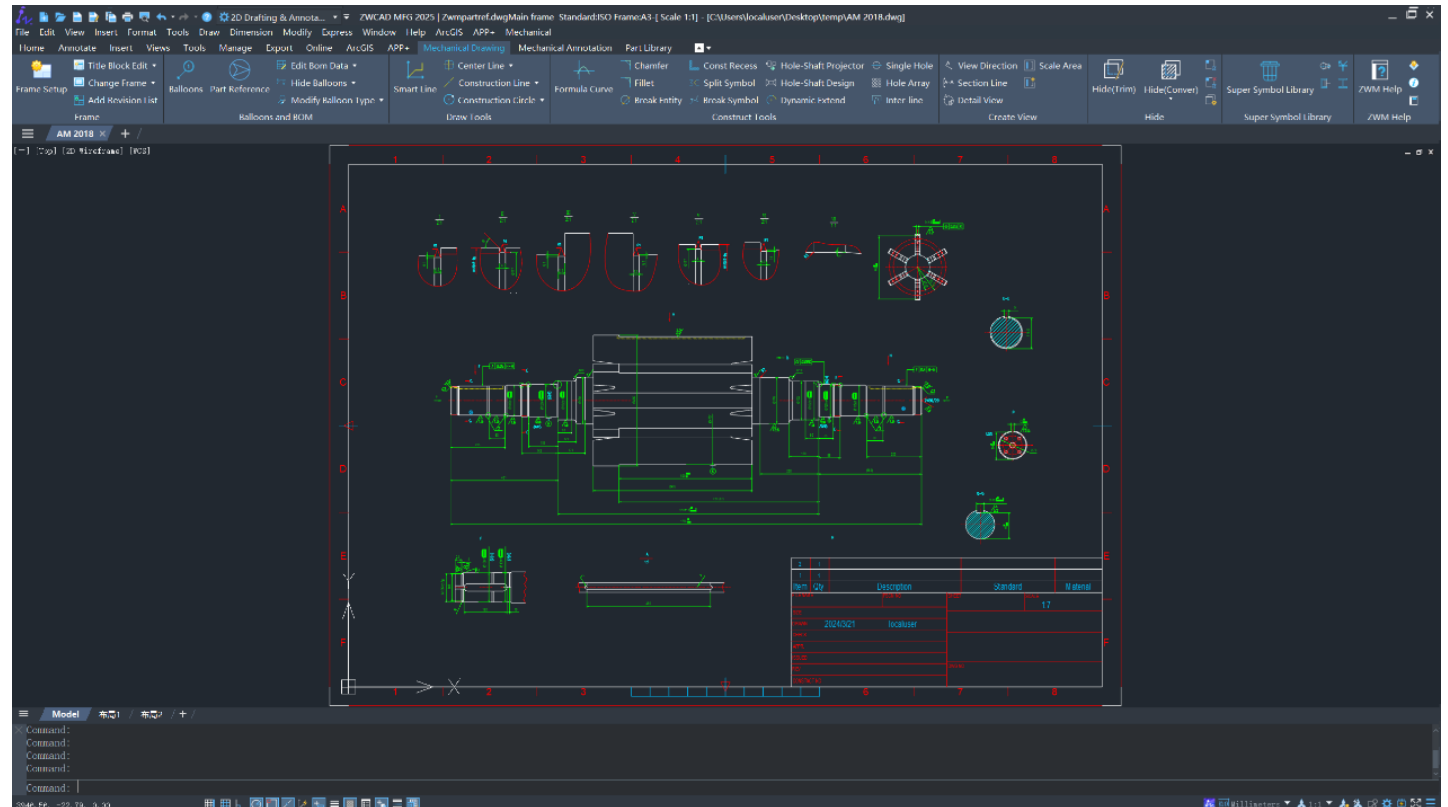
ZWCAD Mechanical 2025 is compatible with AutoCAD Mechanical 2012-2018, which are the most common versions. Some of our customers have plenty of historical drawings from version under 2012 and over 2018. Those drawing files are supposed to be converted to version to 2018 before they're open in ZWCAD Mechanical, which can be quite inconvenient. ZWCAD MFG 2026 solves this problem by supporting AutoCAD Mechanical 2004 to 2024.

Highlight

- Compatible with AutoCAD Mechanical 2004~2024

Customers

- Tyco Electronics
- HIGER Bus
- China General Nuclear Power
- Tangshan Sanyou Group Co., Ltd.
- Lürssen Yachts
- Shanghai Electric



Data Management

ZWCAD MFG, can do more than drawing

ZWCAD MFG, More than drawing

Product management

Background

CAD-Engineers has numbers of dwg files on their computers and have to be aware of the relationship between assembly drawings and part drawings. Some of engineers organize this relationship by renaming the file name according to specific rules with nested folders. In ZWCAD MFG 2026, the new feature "Product Inplace Manager" can handle this problem and relieve this work.

Product Structure Management

Create Project

- Create Project
- Encrypt Project
- Import Project
- Export Project

Product Structure

- Bottom to Top
- Top to Bottom
- Hybrid Design
- *Quick Browse*
- Part Sorting

Data Maintenance

- *Edit Title block*
- *Edit Part List*
- *Assembly-Part Association*
- *Check Data Consistency*
- Manage Attachment

Data Summary

- BOM Data Extraction
- Data Summary

Batch Printing

- Batch Printing
- Joint Plot

Improvements

Be Competitive

Improvements

Function Improvements

Description

4K Display
Adaption

Display effect for User-Interface on 4K-Monitor is optimized.

Ribbon/Menu
Improvement

Layout of ribbon and menu are optimized to improve the user interaction experience;

Parameter
Memory

Recently used parameters are memorized in surface-texture, GD&T and welding-symbol.

Name Extract

Any information in the title block can be extracted to name the file.

Part Favorites

User-defined folder is provided for quickly positioning the part.

Area
Calculation

Isolated island inspection is supported at area/perimeter/mass calculation, to improve the work efficiency.

Part Library

Various kinds of mechanical parts in different national standard has been added to the part library.

Design Efficiency

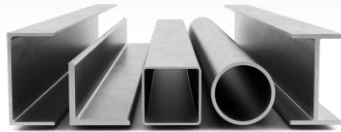
Part Library



Fastener

GB, JIS, KS

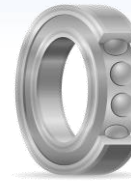
- Rivets
- Nuts
- Screws
- Pins
- Washers



Steel Shape

GB, JIS, KS

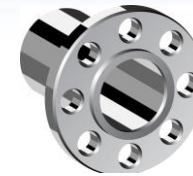
- I/H-Shapes
- L-Shapes
- T-Shapes
- U-Shapes
- ...



Bearing

GB, JIS

- Roller Bearings
- Plain Bearings
- Seals
- ...



Flange

GB, ASME

- Steel Pipe Flanges
- Socket-Weld Flanges
- Welding Neck Flanges
- ...



Elbow

GB

- Elbow
- Cap
- Tee
- Cross
- ...

Thank you!
